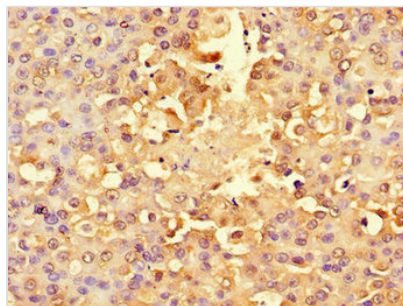




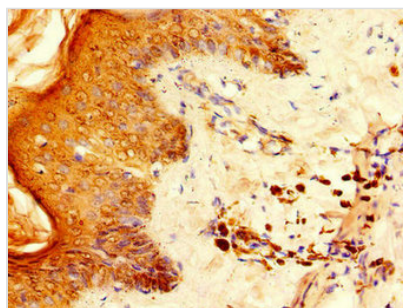
RPS6 Antibody

Product Code	CSB-PA020463LA01HU
Storage	Upon receipt, store at -20°C or -80°C. Avoid repeated freeze.
Uniprot No.	P62753
Immunogen	Recombinant Human 40S ribosomal protein S6 protein (35-229AA)
Raised In	Rabbit
Species Reactivity	Human
Tested Applications	ELISA, IHC, IF; Recommended dilution: IHC:1:20-1:200, IF:1:50-1:200
Form	Liquid
Conjugate	Non-conjugated
Storage Buffer	Preservative: 0.03% Proclin 300 Constituents: 50% Glycerol, 0.01M PBS, PH 7.4
Purification Method	>95%, Protein G purified
Isotype	IgG
Clonality	Polyclonal
Alias	40S ribosomal protein S6 (Phosphoprotein NP33) (Small ribosomal subunit protein eS6), RPS6
Immunogen Species	Homo sapiens (Human)
Research Area	Cell Biology
Target Names	RPS6

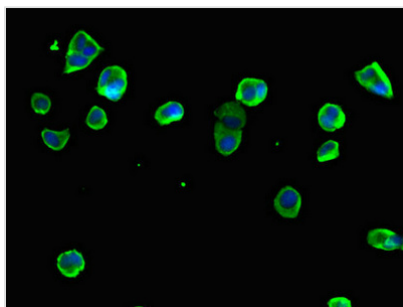
Image



Immunohistochemistry of paraffin-embedded human breast cancer using CSB-PA020463LA01HU at dilution of 1:100



Immunohistochemistry of paraffin-embedded human skin tissue using CSB-PA020463LA01HU at dilution of 1:100



Immunofluorescent analysis of MCF-7 cells using CSB-PA020463LA01HU at dilution of 1:100 and Alexa Fluor 488-conjugated AffiniPure Goat Anti-Rabbit IgG(H+L)