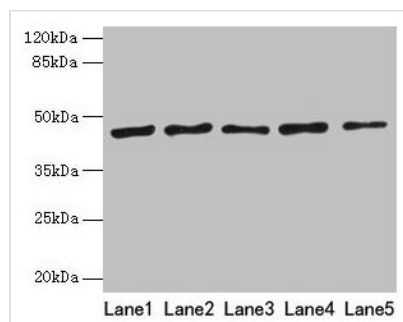




# RRM2 Antibody

<b>Product Code</b>	CSB-PA020519HA01HU
<b>Storage</b>	Upon receipt, store at -20°C or -80°C. Avoid repeated freeze.
<b>Uniprot No.</b>	P31350
<b>Immunogen</b>	Recombinant Human Ribonucleoside-diphosphate reductase subunit M2 protein (1-389AA)
<b>Raised In</b>	Rabbit
<b>Species Reactivity</b>	Human
<b>Tested Applications</b>	ELISA, WB; Recommended dilution: WB:1:1000-1:5000
<b>Form</b>	Liquid
<b>Conjugate</b>	Non-conjugated
<b>Storage Buffer</b>	Preservative: 0.03% Proclin 300 Constituents: 50% Glycerol, 0.01M PBS, PH 7.4
<b>Purification Method</b>	>95%, Protein G purified
<b>Isotype</b>	IgG
<b>Clonality</b>	Polyclonal
<b>Alias</b>	Ribonucleoside-diphosphate reductase subunit M2 (EC 1.17.4.1) (Ribonucleotide reductase small chain) (Ribonucleotide reductase small subunit), RRM2, RR2
<b>Immunogen Species</b>	Homo sapiens (Human)
<b>Research Area</b>	Epigenetics and Nuclear Signaling
<b>Target Names</b>	RRM2

## Image



### Western blot

All lanes: RRM2 antibody at 8µg/ml

Lane 1: HepG2 whole cell lysate

Lane 2: Jurkat whole cell lysate

Lane 3: Hela whole cell lysate

Lane 4: K562 whole cell lysate

Lane 5: 293T whole cell lysate

Secondary

Goat polyclonal to rabbit IgG at 1/10000 dilution

Predicted band size: 45, 52 kDa

Observed band size: 45 kDa