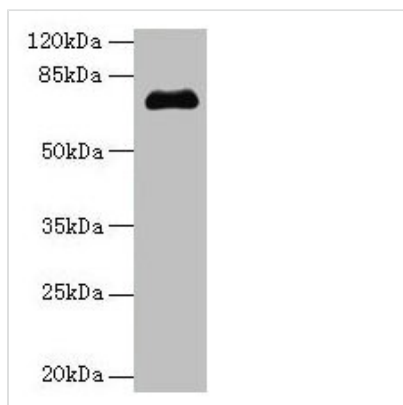




# PMEL Antibody

<b>Product Code</b>	CSB-PA021324LA01HU
<b>Storage</b>	Upon receipt, store at -20°C or -80°C. Avoid repeated freeze.
<b>Uniprot No.</b>	P40967
<b>Immunogen</b>	Recombinant Human Melanocyte protein PMEL protein (25-467AA)
<b>Raised In</b>	Rabbit
<b>Species Reactivity</b>	Human
<b>Tested Applications</b>	ELISA, WB, IHC; Recommended dilution: WB:1:1000-1:5000, IHC:1:200-1:500
<b>Form</b>	Liquid
<b>Conjugate</b>	Non-conjugated
<b>Storage Buffer</b>	Preservative: 0.03% Proclin 300 Constituents: 50% Glycerol, 0.01M PBS, PH 7.4
<b>Purification Method</b>	>95%, Protein G purified
<b>Isotype</b>	IgG
<b>Clonality</b>	Polyclonal
<b>Alias</b>	Melanocyte protein PMEL (ME20-M) (ME20M) (Melanocyte protein Pmel 17) (Melanocytes lineage-specific antigen GP100) (Melanoma-associated ME20 antigen) (P1) (P100) (Premelanosome protein) (Silver locus protein homolog) [Cleaved into: M-alpha (95 kDa melanocyte-specific secreted glycoprotein) (P26) (Secreted melanoma-associated ME20 antigen) (ME20-S) (ME20S); M-beta], PMEL, D12S53E PMEL17 SILV
<b>Immunogen Species</b>	Homo sapiens (Human)
<b>Research Area</b>	Tags & Cell Markers
<b>Target Names</b>	PMEL

## Image



### Western blot

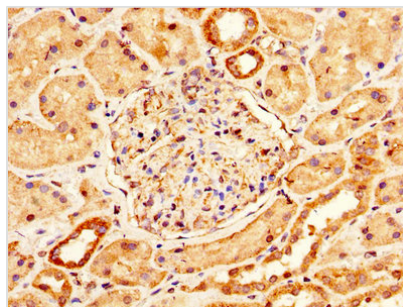
All lanes: PMEL antibody at 14µg/ml + Jurkat whole cell lysate

### Secondary

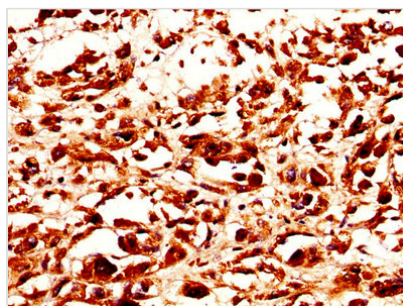
Goat polyclonal to rabbit IgG at 1/10000 dilution

Predicted band size: 71, 61, 67 kDa

Observed band size: 71 kDa



IHC image of CSB-PA021324LA01HU diluted at 1:200 and staining in paraffin-embedded human kidney tissue performed on a Leica Bond™ system. After dewaxing and hydration, antigen retrieval was mediated by high pressure in a citrate buffer (pH 6.0). Section was blocked with 10% normal goat serum 30min at RT. Then primary antibody (1% BSA) was incubated at 4°C overnight. The primary is detected by a biotinylated secondary antibody and visualized using an HRP conjugated SP system.



IHC image of CSB-PA021324LA01HU diluted at 1:200 and staining in paraffin-embedded human melanoma performed on a Leica Bond™ system. After dewaxing and hydration, antigen retrieval was mediated by high pressure in a citrate buffer (pH 6.0). Section was blocked with 10% normal goat serum 30min at RT. Then primary antibody (1% BSA) was incubated at 4°C overnight. The primary is detected by a biotinylated secondary antibody and visualized using an HRP conjugated SP system.