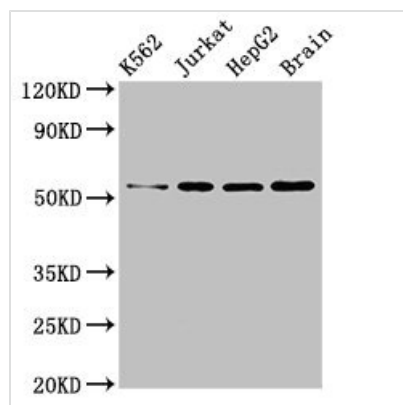




SLC16A8 Antibody

Product Code	CSB-PA021415LA01HU
Storage	Upon receipt, store at -20°C or -80°C. Avoid repeated freeze.
Uniprot No.	O95907
Immunogen	Recombinant Human Monocarboxylate transporter 3 protein (432-504AA)
Raised In	Rabbit
Species Reactivity	Human, Mouse
Tested Applications	ELISA, WB, IHC, IF; Recommended dilution: WB:1:500-1:5000, IHC:1:20-1:200, IF:1:50-1:200
Form	Liquid
Conjugate	Non-conjugated
Storage Buffer	Preservative: 0.03% Proclin 300 Constituents: 50% Glycerol, 0.01M PBS, pH 7.4
Purification Method	>95%, Protein G purified
Isotype	IgG
Clonality	Polyclonal
Alias	Monocarboxylate transporter 3 (MCT 3) (Solute carrier family 16 member 8), SLC16A8, MCT3
Immunogen Species	Homo sapiens (Human)
Research Area	Signal Transduction
Target Names	SLC16A8

Image



Western Blot

Positive WB detected in: K562 whole cell lysate, Jurkat whole cell lysate, HepG2 whole cell lysate, Mouse brain tissue

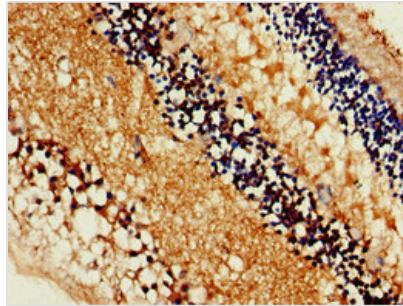
All lanes: SLC16A8 antibody at 3µg/ml

Secondary

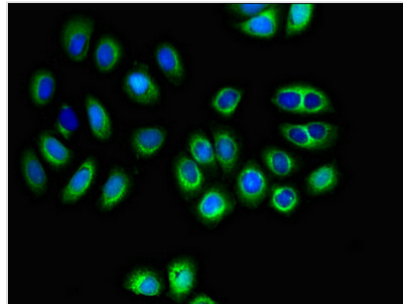
Goat polyclonal to rabbit IgG at 1/50000 dilution

Predicted band size: 53 kDa

Observed band size: 53 kDa



Immunohistochemistry of paraffin-embedded human eye tissue using CSB-PA021415LA01HU at dilution of 1:100



Immunofluorescent analysis of A549 cells using CSB-PA021415LA01HU at dilution of 1:100 and Alexa Fluor 488-conjugated AffiniPure Goat Anti-Rabbit IgG(H+L)