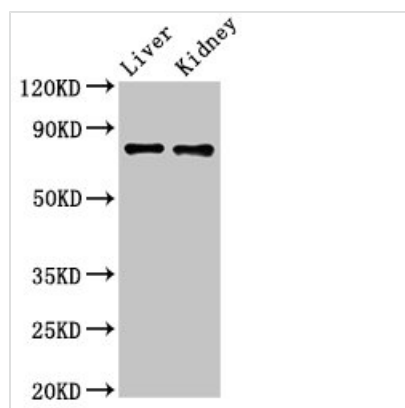




SLC22A23 Antibody

Product Code	CSB-PA021455LA01HU
Storage	Upon receipt, store at -20°C or -80°C. Avoid repeated freeze.
Uniprot No.	A1A5C7
Immunogen	Recombinant Human Solute carrier family 22 member 23 protein (3-206AA)
Raised In	Rabbit
Species Reactivity	Human, Mouse
Tested Applications	ELISA, WB, IHC; Recommended dilution: WB:1:500-1:5000, IHC:1:20-1:200
Form	Liquid
Conjugate	Non-conjugated
Storage Buffer	Preservative: 0.03% Proclin 300 Constituents: 50% Glycerol, 0.01M PBS, pH 7.4
Purification Method	>95%, Protein G purified
Isotype	IgG
Clonality	Polyclonal
Alias	Solute carrier family 22 member 23, SLC22A23, C6orf85
Immunogen Species	Homo sapiens (Human)
Research Area	Others
Target Names	SLC22A23

Image



Western Blot

Positive WB detected in: Mouse liver tissue,
Mouse kidney tissue

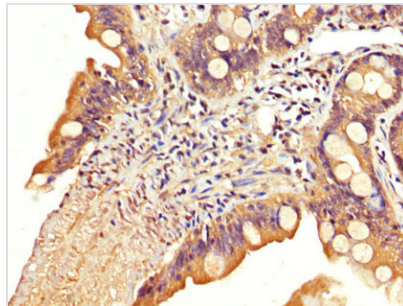
All lanes: SLC22A23 antibody at 5.2μg/ml

Secondary

Goat polyclonal to rabbit IgG at 1/50000 dilution

Predicted band size: 74, 45, 35, 39 kDa

Observed band size: 74 kDa



IHC image of CSB-PA021455LA01HU diluted at 1:200 and staining in paraffin-embedded human small intestine tissue performed on a Leica Bond™ system. After dewaxing and hydration, antigen retrieval was mediated by high pressure in a citrate buffer (pH 6.0). Section was blocked with 10% normal goat serum 30min at RT. Then primary antibody (1% BSA) was incubated at 4°C overnight. The primary is detected by a biotinylated secondary antibody and visualized using an HRP conjugated SP system.