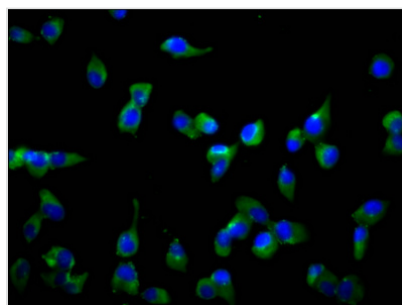




# SLCO1A2 Antibody

<b>Product Code</b>	CSB-PA021741LA01HU
<b>Storage</b>	Upon receipt, store at -20°C or -80°C. Avoid repeated freeze.
<b>Uniprot No.</b>	P46721
<b>Immunogen</b>	Recombinant Human Solute carrier organic anion transporter family member 1A2 protein (406-513AA)
<b>Raised In</b>	Rabbit
<b>Species Reactivity</b>	Human
<b>Tested Applications</b>	ELISA, IF; Recommended dilution: IF:1:50-1:200
<b>Form</b>	Liquid
<b>Conjugate</b>	Non-conjugated
<b>Storage Buffer</b>	Preservative: 0.03% Proclin 300 Constituents: 50% Glycerol, 0.01M PBS, pH 7.4
<b>Purification Method</b>	>95%, Protein G purified
<b>Isotype</b>	IgG
<b>Clonality</b>	Polyclonal
<b>Alias</b>	Solute carrier organic anion transporter family member 1A2 (OATP-A) (Organic anion-transporting polypeptide 1) (OATP-1) (Sodium-independent organic anion transporter) (Solute carrier family 21 member 3), SLCO1A2, OATP OATP1 OATP1A2 SLC21A3
<b>Immunogen Species</b>	Homo sapiens (Human)
<b>Research Area</b>	Signal Transduction
<b>Target Names</b>	SLCO1A2

## Image



Immunofluorescence staining of SH-SY5Y cells with CSB-PA021741LA01HU at 1:166, counter-stained with DAPI. The cells were fixed in 4% formaldehyde, permeabilized using 0.2% Triton X-100 and blocked in 10% normal Goat Serum. The cells were then incubated with the antibody overnight at 4°C. The secondary antibody was Alexa Fluor 488-conjugated AffiniPure Goat Anti-Rabbit IgG(H+L).