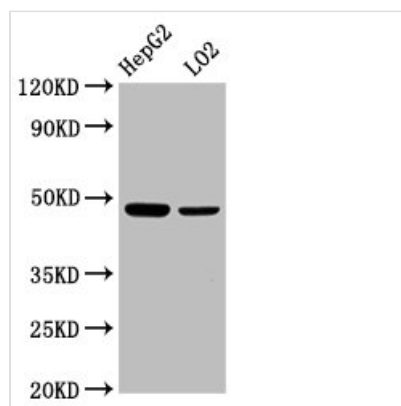




# SMAD7 Antibody

<b>Product Code</b>	CSB-PA021793LA01HU
<b>Storage</b>	Upon receipt, store at -20°C or -80°C. Avoid repeated freeze.
<b>Uniprot No.</b>	O15105
<b>Immunogen</b>	Recombinant Human Mothers against decapentaplegic homolog 7 protein (36-247AA)
<b>Raised In</b>	Rabbit
<b>Species Reactivity</b>	Human
<b>Tested Applications</b>	ELISA, WB, IF; Recommended dilution: WB:1:500-1:5000, IF:1:20-1:200
<b>Form</b>	Liquid
<b>Conjugate</b>	Non-conjugated
<b>Storage Buffer</b>	Preservative: 0.03% Proclin 300 Constituents: 50% Glycerol, 0.01M PBS, pH 7.4
<b>Purification Method</b>	>95%, Protein G purified
<b>Isotype</b>	IgG
<b>Clonality</b>	Polyclonal
<b>Alias</b>	Mothers against decapentaplegic homolog 7, MAD homolog 7, Mothers against DPP homolog 7, Mothers against decapentaplegic homolog 8, MAD homolog 8, Mothers against DPP homolog 8, SMAD family member 7, SMAD 7, Smad7, hSMAD7, SMAD7, MADH7, MADH8
<b>Immunogen Species</b>	Homo sapiens (Human)
<b>Research Area</b>	Epigenetics and Nuclear Signaling; Signal transduction
<b>Target Names</b>	SMAD7

## Image



### Western Blot

Positive WB detected in: HepG2 whole cell lysate, LO2 whole cell lysate

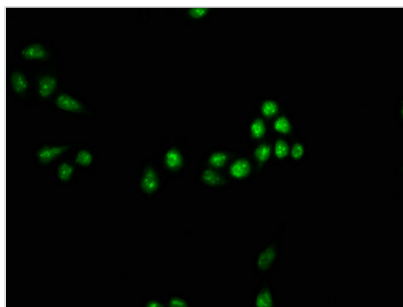
All lanes: SMAD7 antibody at 2.3µg/ml

Secondary

Goat polyclonal to rabbit IgG at 1/50000 dilution

Predicted band size: 47, 24 kDa

Observed band size: 47 kDa



Immunofluorescence staining of HeLa cells with CSB-PA021793LA01HU at 1:33, counter-stained with DAPI. The cells were fixed in 4% formaldehyde, permeabilized using 0.2% Triton X-100 and blocked in 10% normal Goat Serum. The cells were then incubated with the antibody overnight at 4°C. The secondary antibody was Alexa Fluor 488-conjugated AffiniPure Goat Anti-Rabbit IgG(H+L).