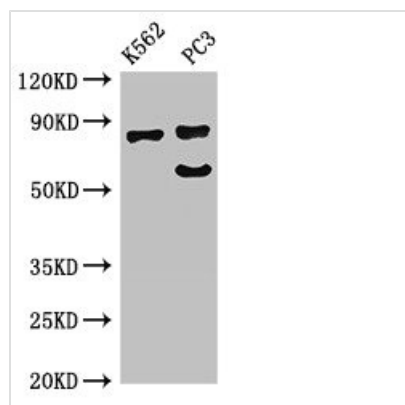




# SP110 Antibody

|                            |   |
|----------------------------|---|
| <b>Product Code</b>        | CSB-PA022440LA01HU  |
| <b>Storage</b>             | Upon receipt, store at -20°C or -80°C. Avoid repeated freeze.   |
| <b>Uniprot No.</b>         | Q9HB58  |
| <b>Immunogen</b>           | Recombinant Human Sp110 nuclear body protein (137-386AA)  |
| <b>Raised In</b>           | Rabbit  |
| <b>Species Reactivity</b>  | Human   |
| <b>Tested Applications</b> | ELISA, WB, IHC, IF; Recommended dilution: WB:1:500-1:5000, IHC:1:20-1:200, IF:1:50-1:200                                    |
| <b>Form</b>                | Liquid  |
| <b>Conjugate</b>           | Non-conjugated  |
| <b>Storage Buffer</b>      | Preservative: 0.03% Proclin 300<br>Constituents: 50% Glycerol, 0.01M PBS, pH 7.4  |
| <b>Purification Method</b> | >95%, Protein G purified  |
| <b>Isotype</b>             | IgG   |
| <b>Clonality</b>           | Polyclonal  |
| <b>Alias</b>               | Sp110 nuclear body protein (Interferon-induced protein 41/75) (Speckled 110 kDa) (Transcriptional coactivator Sp110), SP110 |
| <b>Immunogen Species</b>   | Homo sapiens (Human)  |
| <b>Research Area</b>       | Epigenetics and Nuclear Signaling   |
| <b>Target Names</b>        | SP110   |

## Image



### Western Blot

Positive WB detected in: K562 whole cell lysate, PC-3 whole cell lysate

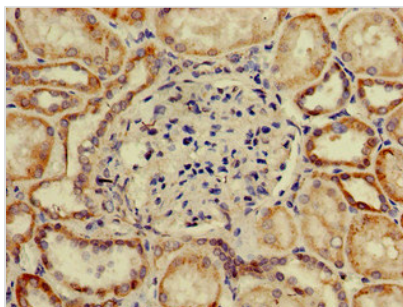
All lanes: SP110 antibody at 2.7µg/ml

### Secondary

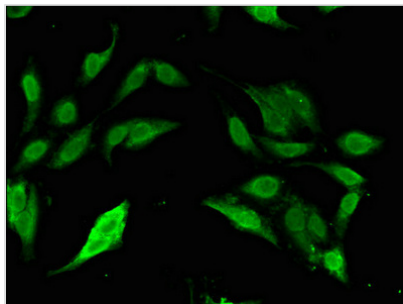
Goat polyclonal to rabbit IgG at 1/50000 dilution

Predicted band size: 79, 47, 62, 29, 82, 63 kDa

Observed band size: 79, 64 kDa



Immunohistochemistry of paraffin-embedded human kidney tissue using CSB-PA022440LA01HU at dilution of 1:100



Immunofluorescent analysis of HeLa cells using CSB-PA022440LA01HU at dilution of 1:100 and Alexa Fluor 488-conjugated AffiniPure Goat Anti-Rabbit IgG(H+L)