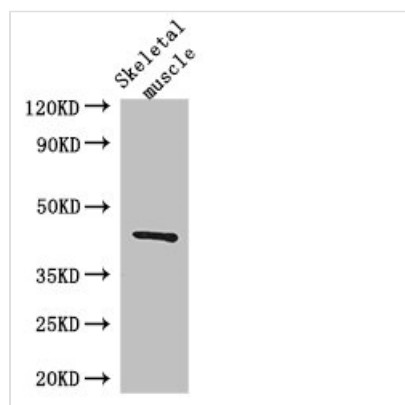




SPHK1 Antibody

Product Code	CSB-PA022564LA01HU
Storage	Upon receipt, store at -20°C or -80°C. Avoid repeated freeze.
Uniprot No.	Q9NYA1
Immunogen	Recombinant Human Sphingosine kinase 1 protein (1-384AA)
Raised In	Rabbit
Species Reactivity	Human, Mouse
Tested Applications	ELISA, WB, IHC, IF; Recommended dilution: WB:1:2000-1:5000, IHC:1:20-1:200, IF:1:50-1:200
Form	Liquid
Conjugate	Non-conjugated
Storage Buffer	Preservative: 0.03% Proclin 300 Constituents: 50% Glycerol, 0.01M PBS, PH 7.4
Purification Method	>95%, Protein G purified
Isotype	IgG
Clonality	Polyclonal
Alias	Sphingosine kinase 1 (SK 1) (SPK 1) (EC 2.7.1.91), SPHK1, SPHK SPK
Immunogen Species	Homo sapiens (Human)
Research Area	Signal Transduction
Target Names	SPHK1

Image



Western Blot

Positive WB detected in: Mouse skeletal muscle tissue

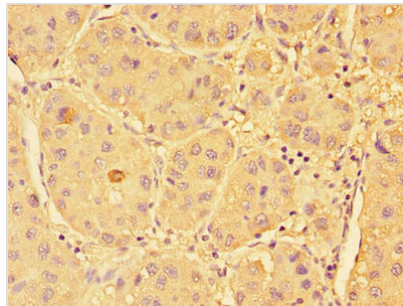
All lanes: SPHK1 antibody at 3μg/ml

Secondary

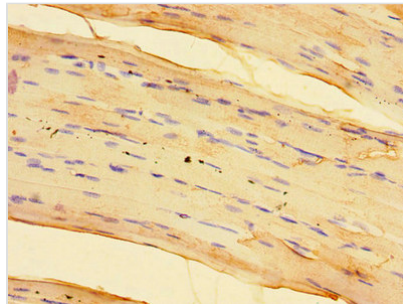
Goat polyclonal to rabbit IgG at 1/50000 dilution

Predicted band size: 43, 52, 44 kDa

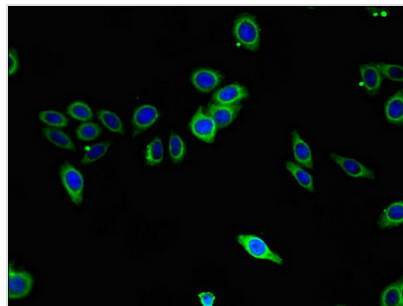
Observed band size: 43 kDa



Immunohistochemistry of paraffin-embedded human liver cancer using CSB-PA022564LA01HU at dilution of 1:100



Immunohistochemistry of paraffin-embedded human skeletal muscle tissue using CSB-PA022564LA01HU at dilution of 1:100



Immunofluorescent analysis of HepG2 cells using CSB-PA022564LA01HU at dilution of 1:100 and Alexa Fluor 488-conjugated AffiniPure Goat Anti-Rabbit IgG(H+L)