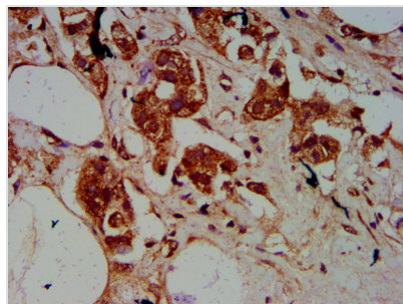




SSR2 Antibody

Product Code	CSB-PA022718LA01HU
Storage	Upon receipt, store at -20°C or -80°C. Avoid repeated freeze.
Uniprot No.	P43308
Immunogen	Recombinant Human Translocon-associated protein subunit beta protein (18-149AA)
Raised In	Rabbit
Species Reactivity	Human
Tested Applications	ELISA, IHC; Recommended dilution: IHC:1:500-1:1000
Form	Liquid
Conjugate	Non-conjugated
Storage Buffer	Preservative: 0.03% Proclin 300 Constituents: 50% Glycerol, 0.01M PBS, pH 7.4
Purification Method	>95%, Protein G purified
Isotype	IgG
Clonality	Polyclonal
Alias	Translocon-associated protein subunit beta (TRAP-beta) (Signal sequence receptor subunit beta) (SSR-beta), SSR2, TRAPB
Immunogen Species	Homo sapiens (Human)
Research Area	Signal Transduction
Target Names	SSR2

Image



IHC image of CSB-PA022718LA01HU diluted at 1:500 and staining in paraffin-embedded human breast cancer performed on a Leica BondTM system. After dewaxing and hydration, antigen retrieval was mediated by high pressure in a citrate buffer (pH 6.0). Section was blocked with 10% normal goat serum 30min at RT. Then primary antibody (1% BSA) was incubated at 4°C overnight. The primary is detected by a biotinylated secondary antibody and visualized using an HRP conjugated SP system.