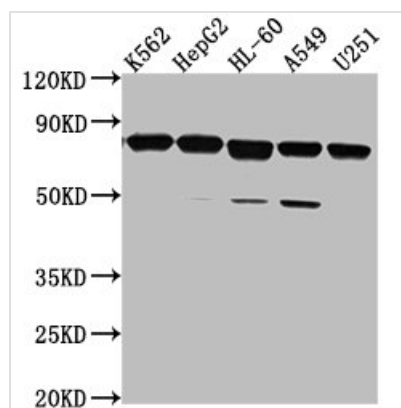




TMEM214 Antibody

| | |
|----------------------------|--|
| Product Code | CSB-PA023808LA01HU |
| Storage | Upon receipt, store at -20°C or -80°C. Avoid repeated freeze. |
| Uniprot No. | Q6NUQ4 |
| Immunogen | Recombinant Human Transmembrane protein 214 protein (2-236AA) |
| Raised In | Rabbit |
| Species Reactivity | Human |
| Tested Applications | ELISA, WB, IP; Recommended dilution: WB:1:1000-1:5000, IP:1:200-1:2000 |
| Form | Liquid |
| Conjugate | Non-conjugated |
| Storage Buffer | Preservative: 0.03% Proclin 300 Constituents: 50% Glycerol, 0.01M PBS, pH 7.4 |
| Purification Method | >95%, Protein G purified |
| Isotype | IgG |
| Clonality | Polyclonal |
| Alias | Transmembrane protein 214, TMEM214 |
| Immunogen Species | Homo sapiens (Human) |
| Research Area | Cell Biology |
| Target Names | TMEM214 |

Image



Western Blot

Positive WB detected in: K562 whole cell lysate, HepG2 whole cell lysate, HL-60 whole cell lysate, A549 whole cell lysate, U251 whole cell lysate

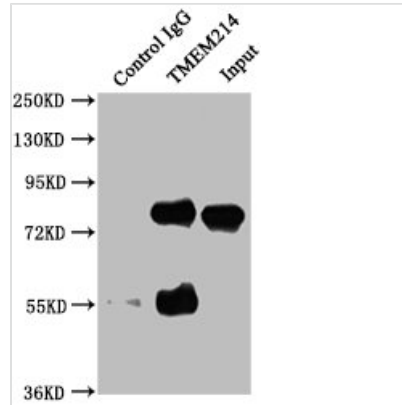
All lanes: TMEM214 antibody at 1:2000

Secondary

Goat polyclonal to rabbit IgG at 1/50000 dilution

Predicted band size: 78, 73 kDa

Observed band size: 78 kDa



Immunoprecipitating TMEM214 in HepG2 whole cell lysate

Lane 1: Rabbit control IgG instead of CSB-PA023808LA01HU in HepG2 whole cell lysate. For western blotting, a HRP-conjugated Protein G antibody was used as the secondary antibody (1/50000)

Lane 2: CSB-PA023808LA01HU (5ug) + HepG2 whole cell lysate (0.5mg)

Lane 3: HepG2 whole cell lysate (20ug)