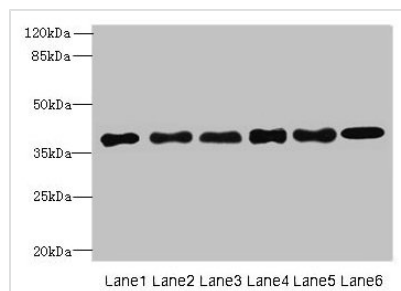




TMEM68 Antibody

Product Code	CSB-PA023872LA01HU
Storage	Upon receipt, store at -20°C or -80°C. Avoid repeated freeze.
Uniprot No.	Q96MH6
Immunogen	Recombinant Human Transmembrane protein 68 protein (74-114AA)
Raised In	Rabbit
Species Reactivity	Human, Mouse
Tested Applications	ELISA, WB, IF; Recommended dilution: WB:1:1000-1:5000, IF:1:50-1:200
Form	Liquid
Conjugate	Non-conjugated
Storage Buffer	Preservative: 0.03% Proclin 300 Constituents: 50% Glycerol, 0.01M PBS, PH 7.4
Purification Method	>95%, Protein G purified
Isotype	IgG
Clonality	Polyclonal
Alias	Transmembrane protein 68, TMEM68
Immunogen Species	Homo sapiens (Human)
Research Area	Signal Transduction
Target Names	TMEM68

Image



Western blot

All lanes: TMEM68 antibody at 4μg/ml

Lane 1: Mouse thymus tissue

Lane 2: K562 whole cell lysate

Lane 3: U251 whole cell lysate

Lane 4: HepG2 whole cell lysate

Lane 5: MCF-7 whole cell lysate

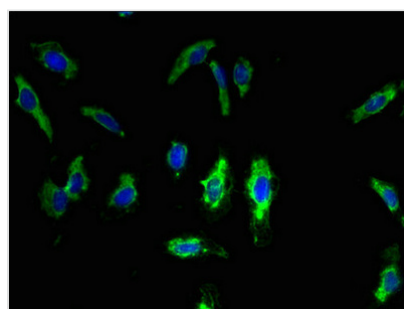
Lane 6: Jurkat whole cell lysate

Secondary

Goat polyclonal to rabbit IgG at 1/10000 dilution

Predicted band size: 38, 30, 16 kDa

Observed band size: 38 kDa



Immunofluorescent analysis of HeLa cells using CSB-PA023872LA01HU at dilution of 1:100 and Alexa Fluor 488-conjugated AffiniPure Goat Anti-Rabbit IgG(H+L)