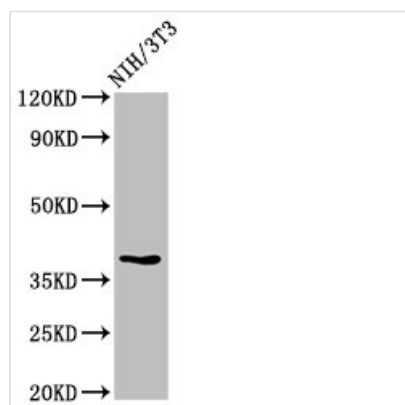




# TOB1 Antibody

|                            |  |
|----------------------------|--|
| <b>Product Code</b>        | CSB-PA024037LA01HU   |
| <b>Storage</b>             | Upon receipt, store at -20°C or -80°C. Avoid repeated freeze.                            |
| <b>Uniprot No.</b>         | P50616   |
| <b>Immunogen</b>           | Recombinant Human Protein Tob1 protein (42-175AA)  |
| <b>Raised In</b>           | Rabbit   |
| <b>Species Reactivity</b>  | Human  |
| <b>Tested Applications</b> | ELISA, WB, IHC, IF; Recommended dilution: WB:1:500-1:5000, IHC:1:20-1:200, IF:1:50-1:200 |
| <b>Form</b>                | Liquid   |
| <b>Conjugate</b>           | Non-conjugated   |
| <b>Storage Buffer</b>      | Preservative: 0.03% Proclin 300<br>Constituents: 50% Glycerol, 0.01M PBS, pH 7.4         |
| <b>Purification Method</b> | >95%, Protein G purified   |
| <b>Isotype</b>             | IgG  |
| <b>Clonality</b>           | Polyclonal   |
| <b>Alias</b>               | Protein Tob1 (Transducer of erbB-2 1), TOB1, TOB TROB1                                   |
| <b>Immunogen Species</b>   | Homo sapiens (Human)   |
| <b>Research Area</b>       | Others   |
| <b>Target Names</b>        | TOB1   |

## Image



### Western Blot

Positive WB detected in: NIH/3T3 whole cell lysate

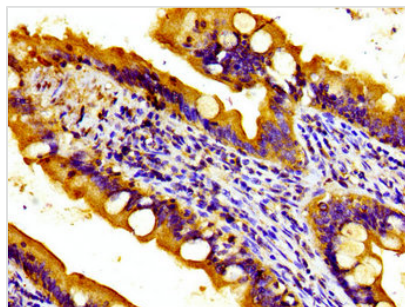
All lanes: TOB1 antibody at 2.7μg/ml

Secondary

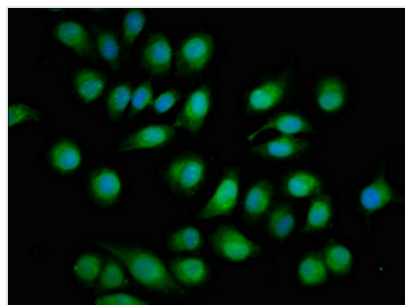
Goat polyclonal to rabbit IgG at 1/50000 dilution

Predicted band size: 39 kDa

Observed band size: 39 kDa



Immunohistochemistry of paraffin-embedded human small intestine tissue using CSB-PA024037LA01HU at dilution of 1:100



Immunofluorescent analysis of A549 cells using CSB-PA024037LA01HU at dilution of 1:100 and Alexa Fluor 488-conjugated AffiniPure Goat Anti-Rabbit IgG(H+L)