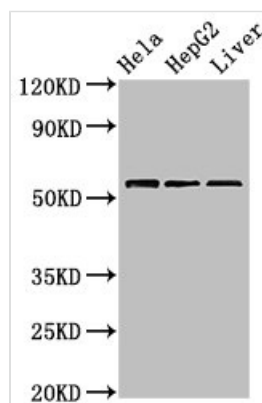




TOM1 Antibody

Product Code	CSB-PA024043LA01HU
Storage	Upon receipt, store at -20°C or -80°C. Avoid repeated freeze.
Uniprot No.	O60784
Immunogen	Recombinant Human Target of Myb protein 1 protein (306-487AA)
Raised In	Rabbit
Species Reactivity	Human, Mouse
Tested Applications	ELISA, WB, IHC, IF; Recommended dilution: WB:1:500-1:5000, IHC:1:20-1:200, IF:1:50-1:200
Form	Liquid
Conjugate	Non-conjugated
Storage Buffer	Preservative: 0.03% Proclin 300 Constituents: 50% Glycerol, 0.01M PBS, pH 7.4
Purification Method	>95%, Protein G purified
Isotype	IgG
Clonality	Polyclonal
Alias	Target of Myb protein 1, TOM1
Immunogen Species	Homo sapiens (Human)
Research Area	Signal Transduction
Target Names	TOM1

Image



Western Blot

Positive WB detected in: HeLa whole cell lysate, HepG2 whole cell lysate, Mouse liver tissue

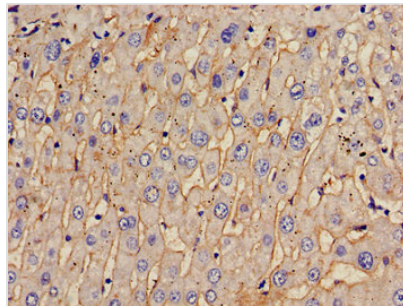
All lanes: TOM1 antibody at 2.4µg/ml

Secondary

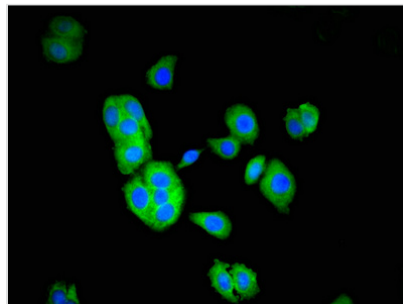
Goat polyclonal to rabbit IgG at 1/50000 dilution

Predicted band size: 54, 49, 51 kDa

Observed band size: 54 kDa



Immunohistochemistry of paraffin-embedded human liver tissue using CSB-PA024043LA01HU at dilution of 1:100



Immunofluorescent analysis of HepG2 cells using CSB-PA024043LA01HU at dilution of 1:100 and Alexa Fluor 488-conjugated AffiniPure Goat Anti-Rabbit IgG(H+L)