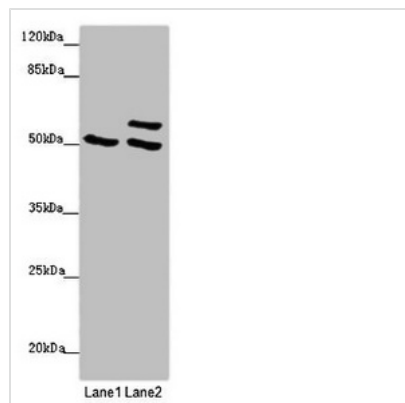




TUBB4A Antibody

Product Code	CSB-PA025324LA01HU
Storage	Upon receipt, store at -20°C or -80°C. Avoid repeated freeze.
Uniprot No.	P04350
Immunogen	Recombinant Human Tubulin beta-4A chain protein (1-444AA)
Raised In	Rabbit
Species Reactivity	Human, Mouse
Tested Applications	ELISA, WB, IHC, IF; Recommended dilution: WB:1:500-1:5000, IHC:1:20-1:200, IF:1:50-1:200
Form	Liquid
Conjugate	Non-conjugated
Storage Buffer	Preservative: 0.03% Proclin 300 Constituents: 50% Glycerol, 0.01M PBS, PH 7.4
Purification Method	>95%, Protein G purified
Isotype	IgG
Clonality	Polyclonal
Alias	Tubulin beta-4A chain (Tubulin 5 beta) (Tubulin beta-4 chain), TUBB4A, TUBB4 TUBB5
Immunogen Species	Homo sapiens (Human)
Research Area	Tags & Cell Markers
Target Names	TUBB4A

Image



Western blot

All lanes: TUBB4A antibody at 2 µg/ml

Lane 1: 293T whole cell lysate

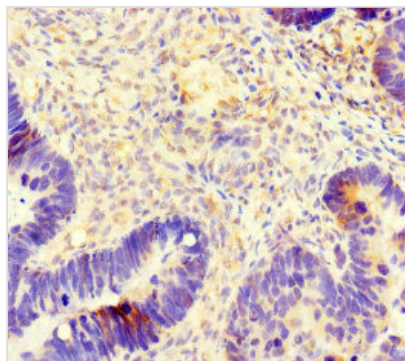
Lane 2: Hela whole cell lysate

Secondary

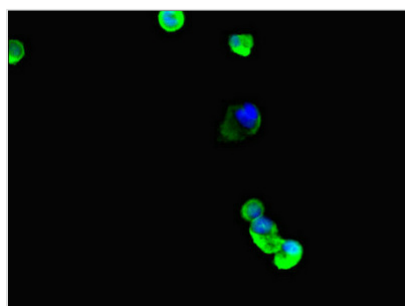
Goat polyclonal to rabbit IgG at 1/10000 dilution

Predicted band size: 50 kDa

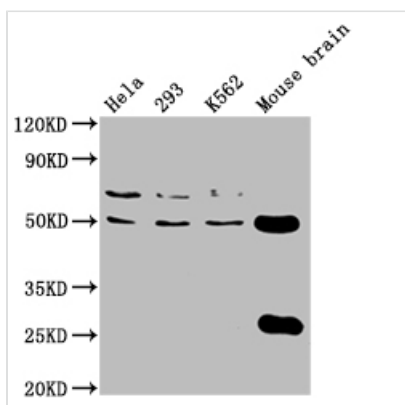
Observed band size: 50, 58 kDa



Immunohistochemistry of paraffin-embedded human ovarian cancer using CSB-PA025324LA01HU at dilution of 1:100



Immunofluorescent analysis of MCF-7 cells using CSB-PA025324LA01HU at dilution of 1:100 and Alexa Fluor 488-conjugated AffiniPure Goat Anti-Rabbit IgG(H+L)



Western Blot

Positive WB detected in: HeLa whole cell lysate, 293 whole cell lysate, K562 whole cell lysate, Mouse brain tissue

All lanes: TUBB4A antibody at 1:2000

Secondary

Goat polyclonal to rabbit IgG at 1/50000 dilution

Predicted band size: 50 kDa

Observed band size: 50 kDa