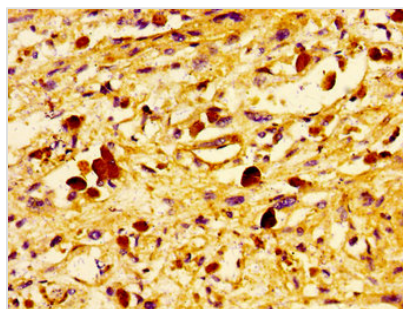




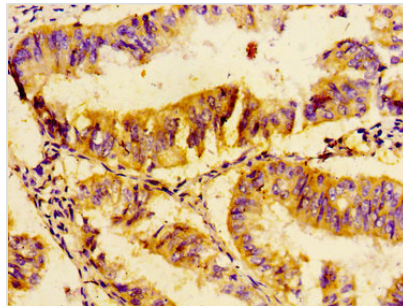
UBE2D2 Antibody

Product Code	CSB-PA025444LA01HU
Storage	Upon receipt, store at -20°C or -80°C. Avoid repeated freeze.
Uniprot No.	P62837
Immunogen	Recombinant Human Ubiquitin-conjugating enzyme E2 D2 protein (1-147AA)
Raised In	Rabbit
Species Reactivity	Human
Tested Applications	ELISA, IHC, IF; Recommended dilution: IHC:1:20-1:200, IF:1:50-1:200
Form	Liquid
Conjugate	Non-conjugated
Storage Buffer	Preservative: 0.03% Proclin 300 Constituents: 50% Glycerol, 0.01M PBS, pH 7.4
Purification Method	>95%, Protein G purified
Isotype	IgG
Clonality	Polyclonal
Alias	Ubiquitin-conjugating enzyme E2 D2 (EC 2.3.2.23) ((E3-independent) E2 ubiquitin-conjugating enzyme D2) (EC 2.3.2.24) (E2 ubiquitin-conjugating enzyme D2) (Ubiquitin carrier protein D2) (Ubiquitin-conjugating enzyme E2(17)KB 2) (Ubiquitin-conjugating enzyme E2-17 kDa 2) (Ubiquitin-protein ligase D2) (p53-regulated ubiquitin-conjugating enzyme 1), UBE2D2, PUBC1 UBC4 UBC5B UBCH4 UBCH5B
Immunogen Species	Homo sapiens (Human)
Research Area	Epigenetics and Nuclear Signaling
Target Names	UBE2D2

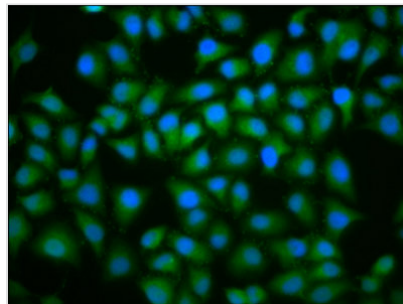
Image



Immunohistochemistry of paraffin-embedded human melanoma using CSB-PA025444LA01HU at dilution of 1:100



Immunohistochemistry of paraffin-embedded human endometrial cancer using CSB-PA025444LA01HU at dilution of 1:100



Immunofluorescence staining of HeLa cells with CSB-PA025444LA01HU at 1:100, counter-stained with DAPI. The cells were fixed in 4% formaldehyde, permeabilized using 0.2% Triton X-100 and blocked in 10% normal Goat Serum. The cells were then incubated with the antibody overnight at 4°C. The secondary antibody was Alexa Fluor 488-conjugated AffiniPure Goat Anti-Rabbit IgG(H+L).