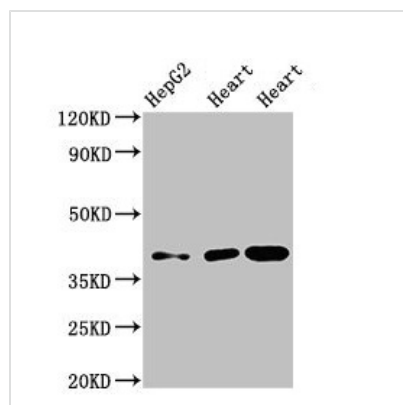




# WISP3 Antibody

<b>Product Code</b>	CSB-PA026121LA01HU
<b>Storage</b>	Upon receipt, store at -20°C or -80°C. Avoid repeated freeze.
<b>Uniprot No.</b>	O95389
<b>Immunogen</b>	Recombinant Human WNT1-inducible-signaling pathway protein 3 protein (201-372AA)
<b>Raised In</b>	Rabbit
<b>Species Reactivity</b>	Human, Mouse, Rat
<b>Tested Applications</b>	ELISA, WB, IHC; Recommended dilution: WB:1:500-1:5000, IHC:1:20-1:200
<b>Form</b>	Liquid
<b>Conjugate</b>	Non-conjugated
<b>Storage Buffer</b>	Preservative: 0.03% Proclin 300 Constituents: 50% Glycerol, 0.01M PBS, pH 7.4
<b>Purification Method</b>	>95%, Protein G purified
<b>Isotype</b>	IgG
<b>Clonality</b>	Polyclonal
<b>Alias</b>	WNT1-inducible-signaling pathway protein 3 (WISP-3) (CCN family member 6), WISP3, CCN6
<b>Immunogen Species</b>	Homo sapiens (Human)
<b>Research Area</b>	Immunology
<b>Target Names</b>	WISP3

## Image

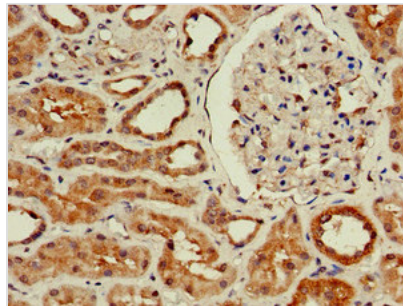


### Western Blot

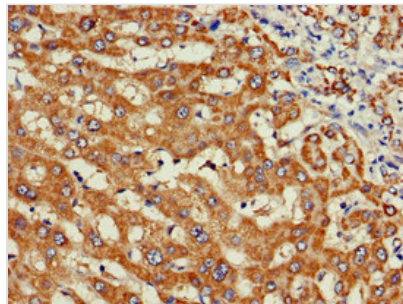
Positive WB detected in: HepG2 whole cell lysate, Rat heart tissue, Mouse heart tissue  
All lanes: WISP3 antibody at 3.5µg/ml

### Secondary

Goat polyclonal to rabbit IgG at 1/50000 dilution  
Predicted band size: 40, 42 kDa  
Observed band size: 40 kDa



Immunohistochemistry of paraffin-embedded human kidney tissue using CSB-PA026121LA01HU at dilution of 1:100



Immunohistochemistry of paraffin-embedded human liver cancer using CSB-PA026121LA01HU at dilution of 1:100