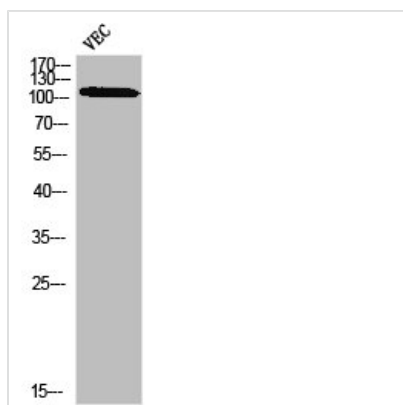




Phospho-PLA2G4A (S505) Antibody

Product Code	CSB-PA030066
Storage	Upon receipt, store at -20°C or -80°C. Avoid repeated freeze.
Uniprot No.	P47712
Immunogen	Synthesized peptide derived from Human cPLA2 around the phosphorylation site of S505.
Raised In	Rabbit
Species Reactivity	Human,Mouse,Rat
Tested Applications	WB, IHC, IF, ELISA; WB:1:500-1:2000, IHC:1:100-1:300, IF:1:200-1:1000, ELISA:1:10000
Form	Liquid
Conjugate	Non-conjugated
Storage Buffer	Liquid in PBS containing 50% glycerol, 0.5% BSA and 0.02% sodium azide.
Purification Method	The antibody was affinity-purified from rabbit antiserum by affinity-chromatography using epitope-specific immunogen.
Isotype	IgG
Alias	PLA2G4A; CPLA2; PLA2G4; Cytosolic phospholipase A2; cPLA2; Phospholipase A2 group IVA
Immunogen Species	Homo sapiens (Human)
Target Names	PLA2G4A

Image



Western blot analysis of VEC using p-cPLA2 (S505) antibody.