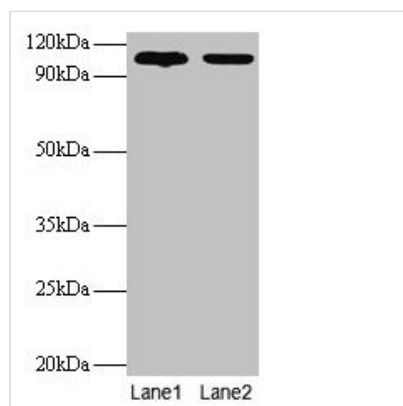




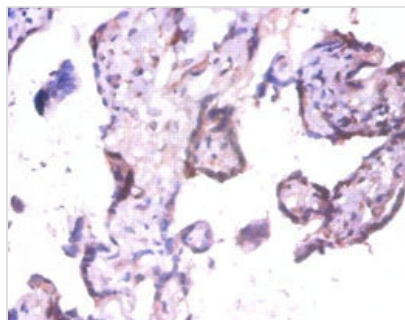
EXTL3 Antibody

Product Code	CSB-PA03075A0Rb
Storage	Upon receipt, store at -20°C or -80°C. Avoid repeated freeze.
Uniprot No.	O43909
Immunogen	Recombinant Human Exostosin-like 3 protein (2-245AA)
Raised In	Rabbit
Species Reactivity	Human
Tested Applications	ELISA, WB, IHC, IF; Recommended dilution: WB:1:500-1:2000, IHC:1:20-1:200, IF:1:50-1:200
Form	Liquid
Conjugate	Non-conjugated
Storage Buffer	Preservative: 0.03% Proclin 300 Constituents: 50% Glycerol, 0.01M PBS, PH 7.4
Purification Method	>95%, Protein G purified
Isotype	IgG
Clonality	Polyclonal
Alias	Exostosin-like 3 (EC 2.4.1.223) (EXT-related protein 1) (Glucuronyl-galactosyl-proteoglycan 4-alpha-N-acetylglucosaminyltransferase) (Hereditary multiple exostoses gene isolog) (Multiple exostosis-like protein 3) (Putative tumor suppressor protein EXTL3), EXTL3, EXTL1L EXTR1 KIAA0519
Immunogen Species	Homo sapiens (Human)
Research Area	Others
Target Names	EXTL3

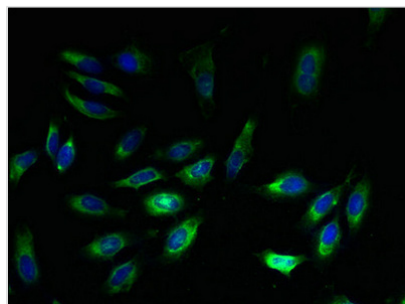
Image



Western blot
All lanes: EXTL3 antibody at 2µg/ml
Lane 1: EC109 whole cell lysate
Lane 2: 293T whole cell lysate
Secondary
Goat polyclonal to rabbit IgG at 1/15000 dilution
Predicted band size: 105 kDa
Observed band size: 105 kDa



Immunohistochemistry of paraffin-embedded human placenta tissue using CSB-PA03075A0Rb at dilution of 1:100



Immunofluorescent analysis of Hela cells using CSB-PA03075A0Rb at dilution of 1:100 and Alexa Fluor 488-conjugated AffiniPure Goat Anti-Rabbit IgG(H+L)