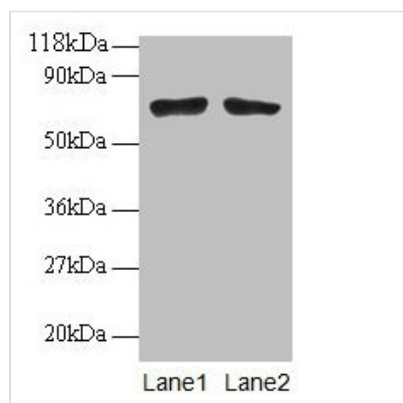




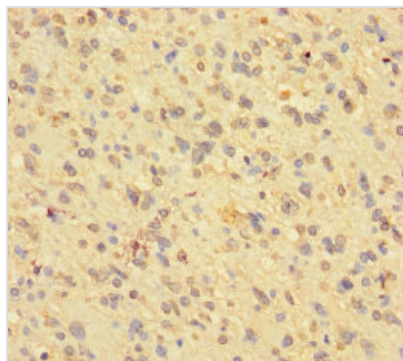
BMI1 Antibody

| | |
|----------------------------|---|
| Product Code | CSB-PA03345A0Rb |
| Storage | Upon receipt, store at -20°C or -80°C. Avoid repeated freeze. |
| Uniprot No. | P35226 |
| Immunogen | Recombinant Human Polycomb complex protein BMI-1 protein (1-247AA) |
| Raised In | Rabbit |
| Species Reactivity | Human |
| Tested Applications | ELISA, WB, IHC; Recommended dilution: WB:1:1000-1:5000, IHC:1:20-1:200 |
| Form | Liquid |
| Conjugate | Non-conjugated |
| Storage Buffer | Preservative: 0.03% Proclin 300 Constituents: 50% Glycerol, 0.01M PBS, PH 7.4 |
| Purification Method | >95%, Protein G purified |
| Isotype | IgG |
| Clonality | Polyclonal |
| Alias | Polycomb complex protein BMI-1 (Polycomb group RING finger protein 4) (RING finger protein 51), BMI1, PCGF4 RNF51 |
| Immunogen Species | Homo sapiens (Human) |
| Research Area | Cell Biology |
| Target Names | BMI1 |

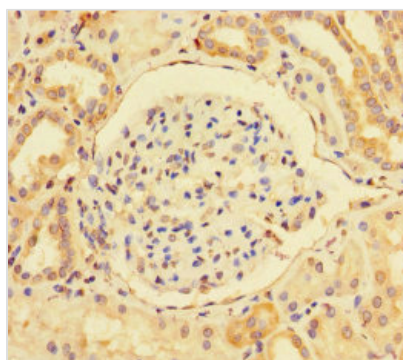
Image



Western blot
All lanes: BMI1 antibody 2µg/ml
Lane 1: EC109 whole cell lysate
Lane 2: 293T whole cell lysate
Secondary
Goat polyclonal to rabbit IgG at 1/15000 dilution
Predicted band size: 37 kDa
Observed band size: 70 kDa



Immunohistochemistry of paraffin-embedded human glioma using CSB-PA03345A0Rb at dilution of 1:100



Immunohistochemistry of paraffin-embedded human kidney tissue using CSB-PA03345A0Rb at dilution of 1:100