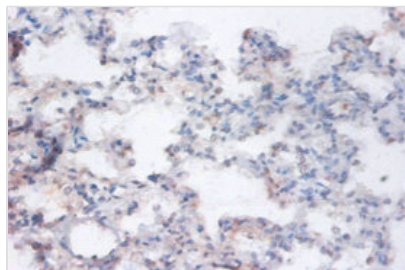




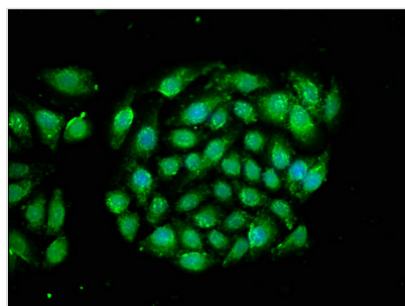
RRAGA Antibody

| | |
|----------------------------|--|
| Product Code | CSB-PA03465A0Rb |
| Storage | Upon receipt, store at -20°C or -80°C. Avoid repeated freeze. |
| Uniprot No. | Q7L523 |
| Immunogen | Recombinant Human Ras-related GTP-binding protein A protein (1-247AA) |
| Raised In | Rabbit |
| Species Reactivity | Human |
| Tested Applications | ELISA, IHC, IF; Recommended dilution: IHC:1:20-1:200, IF:1:50-1:200 |
| Form | Liquid |
| Conjugate | Non-conjugated |
| Storage Buffer | Preservative: 0.03% Proclin 300 Constituents: 50% Glycerol, 0.01M PBS, PH 7.4 |
| Purification Method | >95%, Protein G purified |
| Isotype | IgG |
| Clonality | Polyclonal |
| Alias | Ras-related GTP-binding protein A (Rag A) (RagA) (Adenovirus E3 14.7 kDa-interacting protein 1) (FIP-1), RRAGA |
| Immunogen Species | Homo sapiens (Human) |
| Research Area | Microbiology |
| Target Names | RRAGA |

Image



Immunohistochemistry of paraffin-embedded human lung tissue using CSB-PA03465A0Rb at dilution of 1:100



Immunofluorescence staining of A549 cells with CSB-PA03465A0Rb at 1:66, counter-stained with DAPI. The cells were fixed in 4% formaldehyde, permeabilized using 0.2% Triton X-100 and blocked in 10% normal Goat Serum. The cells were then incubated with the antibody overnight at 4°C. The secondary antibody was Alexa Fluor 488-conjugated AffiniPure Goat Anti-Rabbit IgG(H+L).