



OTUB1 Antibody

Product Code	CSB-PA03595A0Rb
Storage	Upon receipt, store at -20°C or -80°C. Avoid repeated freeze.
Uniprot No.	Q96FW1
Immunogen	Recombinant Human Ubiquitin thioesterase OTUB1 protein (2-201AA)
Raised In	Rabbit
Species Reactivity	Human
Tested Applications	ELISA, WB, IHC; Recommended dilution: WB:1:1000-1:5000, IHC:1:20-1:200
Form	Liquid
Conjugate	Non-conjugated
Storage Buffer	Preservative: 0.03% Proclin 300 Constituents: 50% Glycerol, 0.01M PBS, PH 7.4
Purification Method	>95%, Protein G purified
Isotype	IgG
Clonality	Polyclonal
Alias	Ubiquitin thioesterase OTUB1 (EC 3.4.19.12) (Deubiquitinating enzyme OTUB1) (OTU domain-containing ubiquitin aldehyde-binding protein 1) (Otubain-1) (hOTU1) (Ubiquitin-specific-processing protease OTUB1), OTUB1, OTB1 OTU1
Immunogen Species	Homo sapiens (Human)
Research Area	Epigenetics and Nuclear Signaling
Target Names	OTUB1

Image



Western blot

All lanes: OTUB1 antibody at 2μg/ml

Lane 1: EC109 whole cell lysate

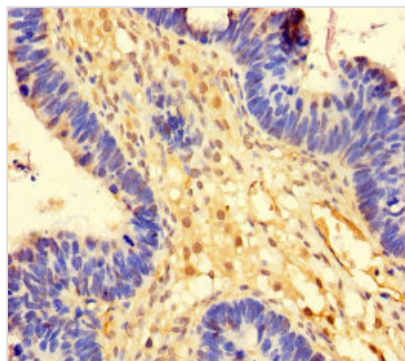
Lane 2: 293T whole cell lysate

Secondary

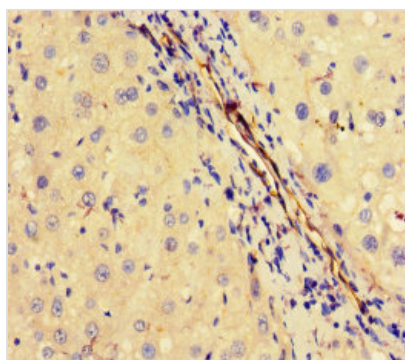
Goat polyclonal to rabbit IgG at 1/15000 dilution

Predicted band size: 32, 36 kDa

Observed band size: 80 kDa



Immunohistochemistry of paraffin-embedded human ovarian cancer using CSB-PA03595A0Rb at dilution of 1:100



Immunohistochemistry of paraffin-embedded human liver cancer using CSB-PA03595A0Rb at dilution of 1:100