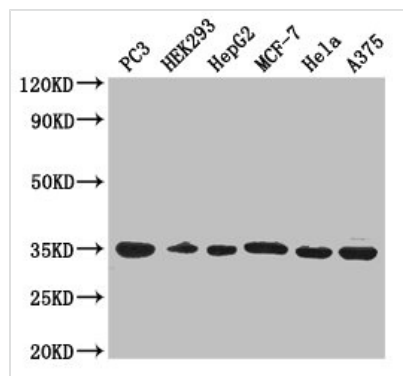




COPE Antibody

Product Code	CSB-PA03669A0Rb
Storage	Upon receipt, store at -20°C or -80°C. Avoid repeated freeze.
Uniprot No.	O14579
Immunogen	Recombinant Human Coatomer subunit epsilon protein (2-308AA)
Raised In	Rabbit
Species Reactivity	Human
Tested Applications	ELISA, WB, IHC; Recommended dilution: WB:1:500-1:5000, IHC:1:20-1:200
Form	Liquid
Conjugate	Non-conjugated
Storage Buffer	Preservative: 0.03% Proclin 300 Constituents: 50% Glycerol, 0.01M PBS, PH 7.4
Purification Method	>95%, Protein G purified
Isotype	IgG
Clonality	Polyclonal
Alias	Coatomer subunit epsilon (Epsilon-coat protein) (Epsilon-COP), COPE
Immunogen Species	Homo sapiens (Human)
Research Area	Signal Transduction
Target Names	COPE

Image



Western Blot

Positive WB detected in: PC-3 whole cell lysate, HEK293 whole cell lysate, HepG2 whole cell lysate, MCF-7 whole cell lysate, HeLa whole cell lysate, A375 whole cell lysate

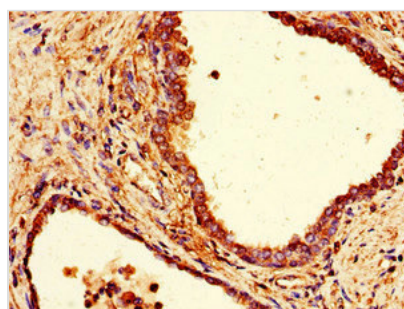
All lanes: COPE antibody at 3µg/ml

Secondary

Goat polyclonal to rabbit IgG at 1/50000 dilution

Predicted band size: 35, 29 kDa

Observed band size: 35 kDa



Immunohistochemistry of paraffin-embedded human prostate cancer using CSB-PA03669A0Rb at dilution of 1:100