



# TUBB3 Antibody

<b>Product Code</b>	CSB-PA03874A0Rb
<b>Storage</b>	Upon receipt, store at -20°C or -80°C. Avoid repeated freeze.
<b>Uniprot No.</b>	Q13509
<b>Immunogen</b>	Recombinant Human Tubulin beta-3 chain protein (1-210AA)
<b>Raised In</b>	Rabbit
<b>Species Reactivity</b>	Human, Mouse
<b>Tested Applications</b>	ELISA, WB, IHC; Recommended dilution: WB:1:500-1:5000, IHC:1:20-1:200
<b>Form</b>	Liquid
<b>Conjugate</b>	Non-conjugated
<b>Storage Buffer</b>	Preservative: 0.03% Proclin 300 Constituents: 50% Glycerol, 0.01M PBS, PH 7.4
<b>Purification Method</b>	>95%, Protein G purified
<b>Isotype</b>	IgG
<b>Clonality</b>	Polyclonal
<b>Alias</b>	Tubulin beta-3 chain (Tubulin beta-4 chain) (Tubulin beta-III), TUBB3, TUBB4
<b>Immunogen Species</b>	Homo sapiens (Human)
<b>Research Area</b>	Signal Transduction
<b>Target Names</b>	TUBB3

## Image



### Western blot

All lanes: TUBB3 antibody at 6μg/ml

Lane 1: A549 whole cell lysate

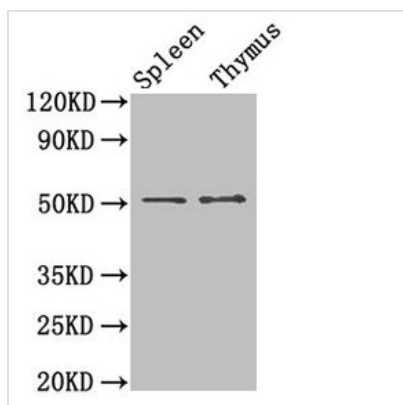
Lane 2: A431 whole cell lysate

Secondary

Goat polyclonal to rabbit IgG at 1/10000 dilution

Predicted band size: 51, 43 kDa

Observed band size: 51 kDa



#### Western Blot

Positive WB detected in: Mouse spleen tissue,  
Mouse thymus tissue

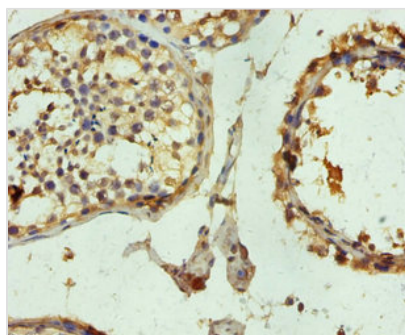
All lanes: TUBB3 antibody at 1.5µg/ml

Secondary

Goat polyclonal to rabbit IgG at 1/50000 dilution

Predicted band size: 51, 43 kDa

Observed band size: 51 kDa



Immunohistochemistry of paraffin-embedded  
human testis tissue using CSB-PA03874A0Rb at  
dilution of 1:100