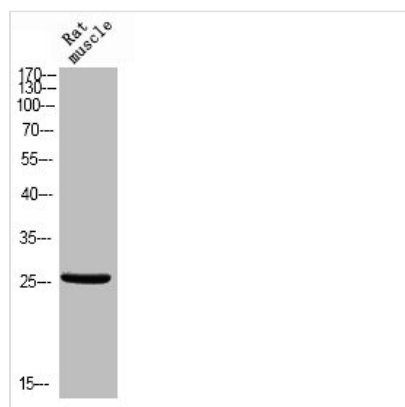




Phospho-BCL2L1 (T47) Antibody

Product Code	CSB-PA040206
Storage	Upon receipt, store at -20°C or -80°C. Avoid repeated freeze.
Uniprot No.	Q07817
Immunogen	Synthesized peptide derived from Human Bcl-x around the phosphorylation site of T47.
Raised In	Rabbit
Species Reactivity	Human,Mouse,Rat
Tested Applications	WB, IHC, IF, ELISA; WB:1:500-1:2000, IHC:1:100-1:300, IF:1:200-1:1000, ELISA:1:40000
Form	Liquid
Conjugate	Non-conjugated
Storage Buffer	Liquid in PBS containing 50% glycerol, 0.5% BSA and 0.02% sodium azide.
Purification Method	The antibody was affinity-purified from rabbit antiserum by affinity-chromatography using epitope-specific immunogen.
Isotype	IgG
Alias	BCL2L1; BCL2L; BCLX; Bcl-2-like protein 1; Bcl2-L-1; Apoptosis regulator Bcl-X
Immunogen Species	Homo sapiens (Human)
Target Names	BCL2L1

Image



Western blot analysis of RAT-MUSCLE using Phospho-Bcl-x (T47) antibody.