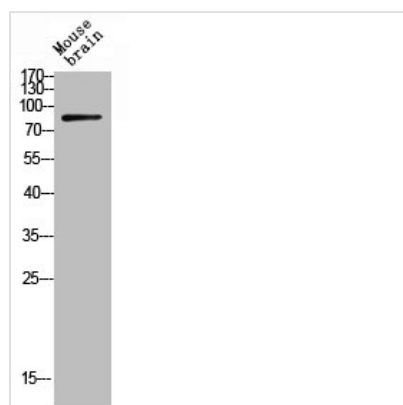




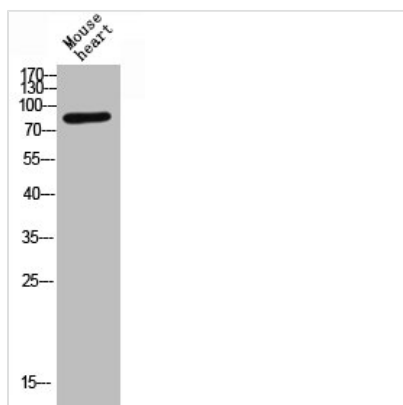
Phospho-BCL6 (S333) Antibody

Product Code	CSB-PA040219
Storage	Upon receipt, store at -20°C or -80°C. Avoid repeated freeze.
Uniprot No.	P41182
Immunogen	Synthesized peptide derived from Human Bcl-6 around the phosphorylation site of S333.
Raised In	Rabbit
Species Reactivity	Human,Mouse,Rat
Tested Applications	WB, ELISA; WB:1:500-1:2000, ELISA:1:5000
Form	Liquid
Conjugate	Non-conjugated
Storage Buffer	Liquid in PBS containing 50% glycerol, 0.5% BSA and 0.02% sodium azide.
Purification Method	The antibody was affinity-purified from rabbit antiserum by affinity-chromatography using epitope-specific immunogen.
Isotype	IgG
Alias	BCL6; BCL5; LAZ3; ZBTB27; ZNF51; B-cell lymphoma 6 protein; BCL-6; B-cell lymphoma 5 protein; BCL-5; Protein LAZ-3; Zinc finger and BTB domain-containing protein 27; Zinc finger protein 51
Immunogen Species	Homo sapiens (Human)
Target Names	BCL6

Image



Western Blot analysis of MOUSE-HEART cells using Phospho-Bcl-6 (S333) Polyclonal Antibody



Western blot analysis of mouse-heart lysis using Phospho-Bcl-6 (S333) antibody.