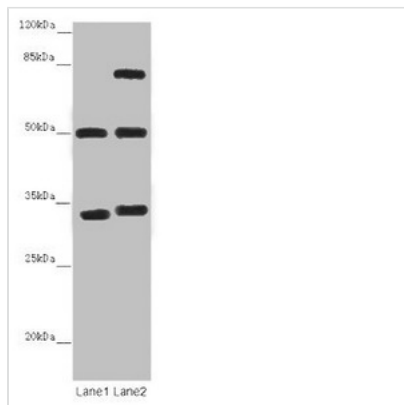




TUBA1B Antibody

Product Code	CSB-PA04189A0Rb
Storage	Upon receipt, store at -20°C or -80°C. Avoid repeated freeze.
Uniprot No.	P68363
Immunogen	Recombinant Human Tubulin alpha-1B chain protein (29-310AA)
Raised In	Rabbit
Species Reactivity	Human, Mouse
Tested Applications	ELISA, WB, IHC, IF; Recommended dilution: WB:1:1000-1:5000, IHC:1:20-1:200, IF:1:50-1:200
Form	Liquid
Conjugate	Non-conjugated
Storage Buffer	Preservative: 0.03% Proclin 300 Constituents: 50% Glycerol, 0.01M PBS, PH 7.4
Purification Method	>95%, Protein G purified
Isotype	IgG
Clonality	Polyclonal
Alias	Tubulin alpha-1B chain (Alpha-tubulin ubiquitous) (Tubulin K-alpha-1) (Tubulin alpha-ubiquitous chain) [Cleaved into: Detyrosinated tubulin alpha-1B chain], TUBA1B
Immunogen Species	Homo sapiens (Human)
Research Area	Signal Transduction
Target Names	TUBA1B

Image



Western blot

All lanes: TUBA1B antibody at 12 µg/ml

Lane 1: Mouse brain tissue

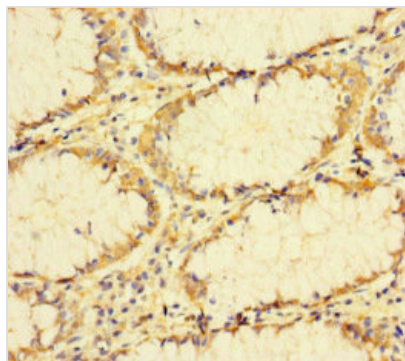
Lane 2: Mouse liver tissue

Secondary

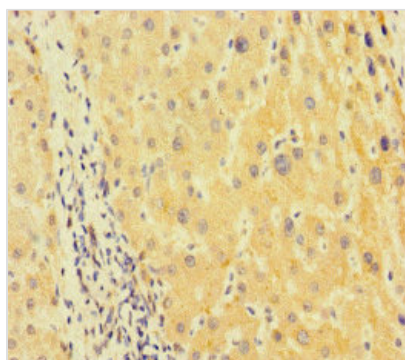
Goat polyclonal to rabbit IgG at 1/10000 dilution

Predicted band size: 51, 38 kDa

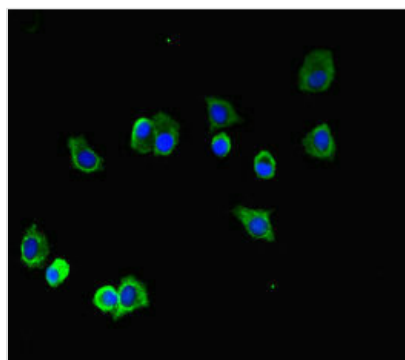
Observed band size: 51, 34, 75 kDa



Immunohistochemistry of paraffin-embedded human colon cancer using CSB-PA04189A0Rb at dilution of 1:100



Immunohistochemistry of paraffin-embedded human liver cancer using CSB-PA04189A0Rb at dilution of 1:100



Immunofluorescent analysis of HepG2 cells using CSB-PA04189A0Rb at dilution of 1:100 and Alexa Fluor 488-conjugated AffiniPure Goat Anti-Rabbit IgG(H+L)