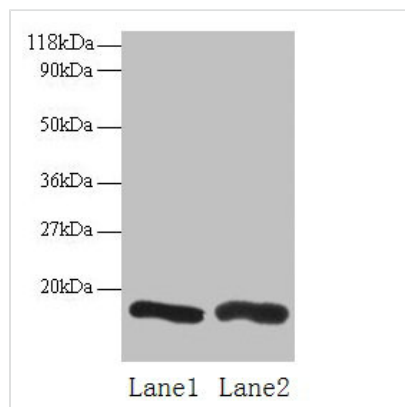




# CHMP2A Antibody

<b>Product Code</b>	CSB-PA04524A0Rb
<b>Storage</b>	Upon receipt, store at -20°C or -80°C. Avoid repeated freeze.
<b>Uniprot No.</b>	O43633
<b>Immunogen</b>	Recombinant Human Charged multivesicular body protein 2a protein (1-222AA)
<b>Raised In</b>	Rabbit
<b>Species Reactivity</b>	Human
<b>Tested Applications</b>	ELISA, WB, IHC; Recommended dilution: WB:1:1000-1:5000, IHC:1:20-1:200
<b>Form</b>	Liquid
<b>Conjugate</b>	Non-conjugated
<b>Storage Buffer</b>	Preservative: 0.03% Proclin 300 Constituents: 50% Glycerol, 0.01M PBS, PH 7.4
<b>Purification Method</b>	>95%, Protein G purified
<b>Isotype</b>	IgG
<b>Clonality</b>	Polyclonal
<b>Alias</b>	Charged multivesicular body protein 2a (Chromatin-modifying protein 2a) (CHMP2a) (Putative breast adenocarcinoma marker BC-2) (Vacuolar protein sorting-associated protein 2-1) (Vps2-1) (hVps2-1), CHMP2A, BC2 CHMP2
<b>Immunogen Species</b>	Homo sapiens (Human)
<b>Research Area</b>	Signal Transduction
<b>Target Names</b>	CHMP2A

## Image



### Western blot

All lanes: CHMP2A antibody at 2μg/ml

Lane 1: EC109 whole cell lysate

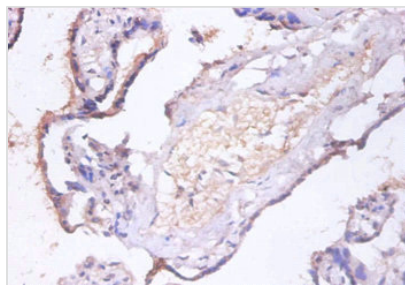
Lane 2: 293T whole cell lysate

Secondary

Goat polyclonal to rabbit IgG at 1/15000 dilution

Predicted band size: 26 kDa

Observed band size: 16 kDa



Immunohistochemistry of paraffin-embedded human placenta tissue using CSB-PA04524A0Rb at dilution of 1:100