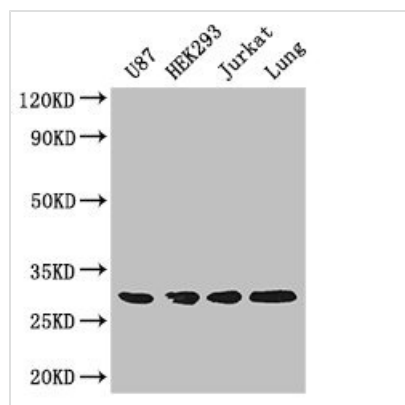




LASP1 Antibody

Product Code	CSB-PA04629A0Rb
Storage	Upon receipt, store at -20°C or -80°C. Avoid repeated freeze.
Uniprot No.	Q14847
Immunogen	Recombinant Human LIM and SH3 domain protein 1 protein (128-252AA)
Raised In	Rabbit
Species Reactivity	Human, Mouse
Tested Applications	ELISA, WB, IHC, IF, IP; Recommended dilution: WB:1:500-1:2000, IHC:1:20-1:200, IF:1:50-1:200, IP:1:200-1:2000
Form	Liquid
Conjugate	Non-conjugated
Storage Buffer	Preservative: 0.03% Proclin 300 Constituents: 50% Glycerol, 0.01M PBS, PH 7.4
Purification Method	>95%, Protein G purified
Isotype	IgG
Clonality	Polyclonal
Alias	LIM and SH3 domain protein 1 (LASP-1) (Metastatic lymph node gene 50 protein) (MLN 50), LASP1, MLN50
Immunogen Species	Homo sapiens (Human)
Research Area	Signal Transduction
Target Names	LASP1

Image



Western Blot

Positive WB detected in: U87 whole cell lysate, HEK293 whole cell lysate, Jurkat whole cell lysate, Mouse lung tissue

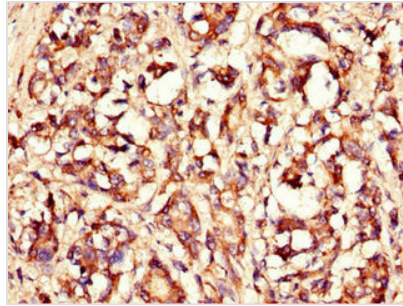
All lanes: LASP1 antibody at 4μg/ml

Secondary

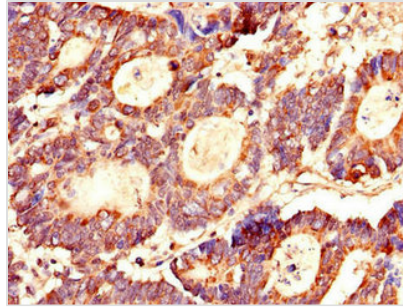
Goat polyclonal to rabbit IgG at 1/50000 dilution

Predicted band size: 30, 37, 24 kDa

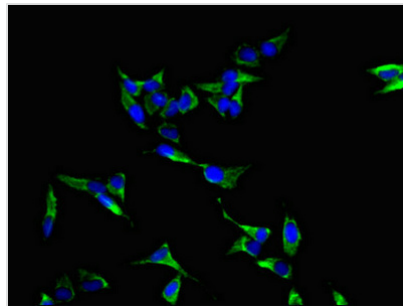
Observed band size: 30 kDa



Immunohistochemistry of paraffin-embedded human gastric cancer using CSB-PA04629A0Rb at dilution of 1:100



Immunohistochemistry of paraffin-embedded human colon cancer using CSB-PA04629A0Rb at dilution of 1:100



Immunofluorescent analysis of Hela cells using CSB-PA04629A0Rb at dilution of 1:100 and Alexa Fluor 488-conjugated AffiniPure Goat Anti-Rabbit IgG(H+L)