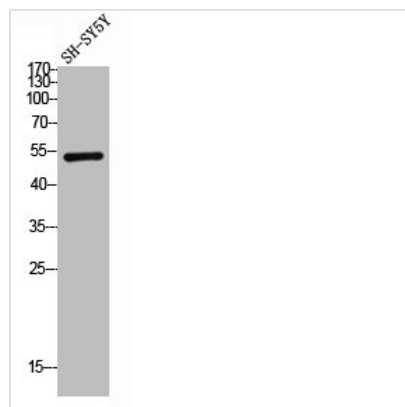




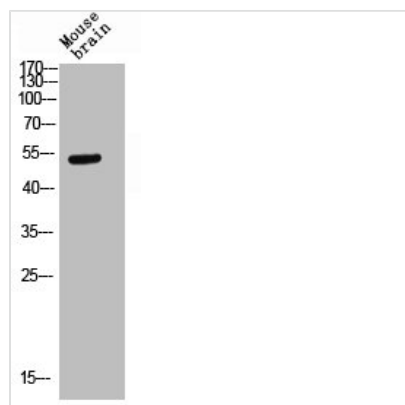
SLC2A3 Antibody

Product Code	CSB-PA050080
Storage	Upon receipt, store at -20°C or -80°C. Avoid repeated freeze.
Uniprot No.	P11169
Immunogen	Synthesized peptide derived from the C-terminal region of Human Glut3.
Raised In	Rabbit
Species Reactivity	Human
Tested Applications	WB, IHC, ELISA; WB:1:500-1:2000, IHC:1:100-1:300, ELISA:1:10000
Form	Liquid
Conjugate	Non-conjugated
Storage Buffer	Liquid in PBS containing 50% glycerol, 0.5% BSA and 0.02% sodium azide.
Purification Method	The antibody was affinity-purified from rabbit antiserum by affinity-chromatography using epitope-specific immunogen.
Isotype	IgG
Alias	SLC2A3; GLUT3; Solute carrier family 2; facilitated glucose transporter member 3; Glucose transporter type 3, brain; GLUT-3
Immunogen Species	Homo sapiens (Human)
Target Names	SLC2A3

Image



Western Blot analysis of SH-SY5Y cells using Glut3 Polyclonal Antibody



Western blot analysis of Mouse-kidney lysis using Glut3 antibody.