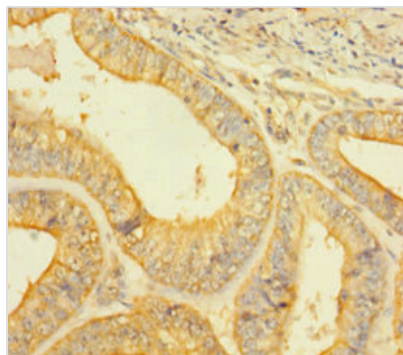




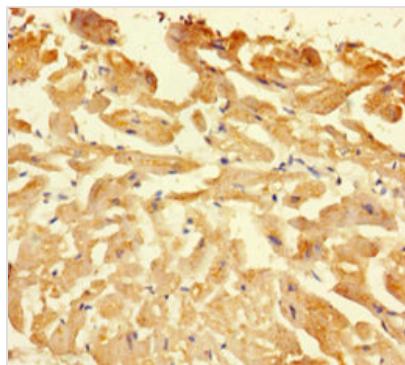
CASP1 Antibody

Product Code	CSB-PA05829A0Rb
Storage	Upon receipt, store at -20°C or -80°C. Avoid repeated freeze.
Uniprot No.	P29466
Immunogen	Recombinant Human Caspase-1 protein (120-269AA)
Raised In	Rabbit
Species Reactivity	Human
Tested Applications	ELISA, IHC, IF; Recommended dilution: IHC:1:20-1:200, IF:1:50-1:500
Form	Liquid
Conjugate	Non-conjugated
Storage Buffer	Preservative: 0.03% Proclin 300 Constituents: 50% Glycerol, 0.01M PBS, PH 7.4
Purification Method	>95%, Protein G purified
Isotype	IgG
Clonality	Polyclonal
Alias	Caspase-1 (CASP-1) (EC 3.4.22.36) (Interleukin-1 beta convertase) (IL-1BC) (Interleukin-1 beta-converting enzyme) (ICE) (IL-1 beta-converting enzyme) (p45) [Cleaved into: Caspase-1 subunit p20; Caspase-1 subunit p10], CASP1, IL1BC IL1BCE
Immunogen Species	Homo sapiens (Human)
Research Area	Cell Biology
Target Names	CASP1

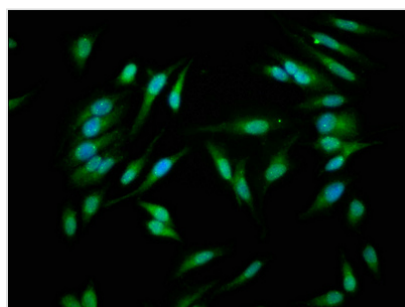
Image



Immunohistochemistry of paraffin-embedded human endometrial cancer using CSB-PA05829A0Rb at dilution of 1:100



Immunohistochemistry of paraffin-embedded human heart tissue using CSB-PA05829A0Rb at dilution of 1:100



Immunofluorescence staining of HeLa cells with CSB-PA05829A0Rb at 1:266, counter-stained with DAPI. The cells were fixed in 4% formaldehyde, permeabilized using 0.2% Triton X-100 and blocked in 10% normal Goat Serum. The cells were then incubated with the antibody overnight at 4°C. The secondary antibody was Alexa Fluor 488-conjugated AffiniPure Goat Anti-Rabbit IgG(H+L).