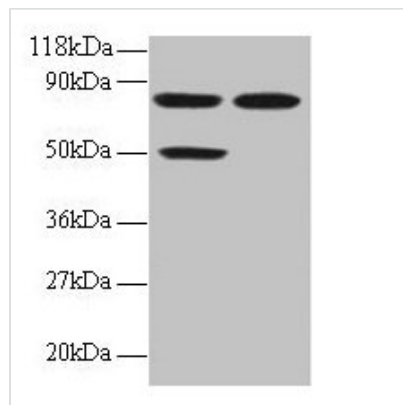




CCL22 Antibody

Product Code	CSB-PA05895A0Rb
Storage	Upon receipt, store at -20°C or -80°C. Avoid repeated freeze.
Uniprot No.	O00626
Immunogen	Recombinant Human C-C motif chemokine 22 protein (25-82AA)
Raised In	Rabbit
Species Reactivity	Human
Tested Applications	ELISA, WB; Recommended dilution: WB:1:500-1:5000
Form	Liquid
Conjugate	Non-conjugated
Storage Buffer	Preservative: 0.03% Proclin 300 Constituents: 50% Glycerol, 0.01M PBS, PH 7.4
Purification Method	>95%, Protein G purified
Isotype	IgG
Clonality	Polyclonal
Alias	C-C motif chemokine 22 (CC chemokine STCP-1) (MDC(1-69)) (Macrophage-derived chemokine) (Small-inducible cytokine A22) (Stimulated T-cell chemotactic protein 1) [Cleaved into: MDC(3-69); MDC(5-69); MDC(7-69)], CCL22, MDC SCYA22
Immunogen Species	Homo sapiens (Human)
Research Area	Immunology
Target Names	CCL22

Image



Western blot

All lanes: CCL22 antibody at 2µg/ml

Lane 1: 293T whole cell lysate

Lane 2: EC109 whole cell lysate

Secondary

Goat polyclonal to rabbit IgG at 1/15000 dilution

Predicted band size: 11 kDa

Observed band size: 50, 80 kDa