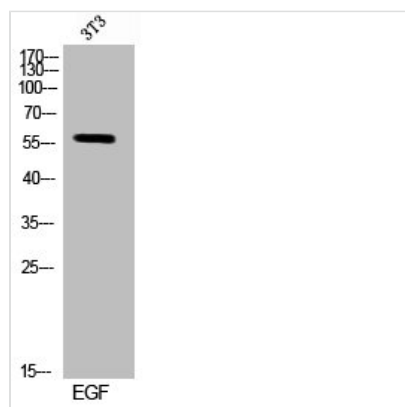




# Phospho-STAM2 (Y192) Antibody

|                            |   |
|----------------------------|---|
| <b>Product Code</b>        | CSB-PA070192  |
| <b>Storage</b>             | Upon receipt, store at -20°C or -80°C. Avoid repeated freeze.   |
| <b>Uniprot No.</b>         | O75886  |
| <b>Immunogen</b>           | Synthesized peptide derived from Human STAM2 around the phosphorylation site of Y192.                                 |
| <b>Raised In</b>           | Rabbit  |
| <b>Species Reactivity</b>  | Human, Mouse  |
| <b>Tested Applications</b> | WB, IHC, ELISA; WB:1:500-1:2000, IHC:1:100-1:300, ELISA:1:10000   |
| <b>Form</b>                | Liquid  |
| <b>Conjugate</b>           | Non-conjugated  |
| <b>Storage Buffer</b>      | Liquid in PBS containing 50% glycerol, 0.5% BSA and 0.02% sodium azide.   |
| <b>Purification Method</b> | The antibody was affinity-purified from rabbit antiserum by affinity-chromatography using epitope-specific immunogen. |
| <b>Isotype</b>             | IgG   |
| <b>Alias</b>               | STAM2; HBP; Signal transducing adapter molecule 2; STAM-2; Hrs-binding protein  |
| <b>Immunogen Species</b>   | Homo sapiens (Human)  |
| <b>Target Names</b>        | STAM2   |

## Image



Western Blot analysis of 3T3 cells using Phospho-STAM2 (Y192) Polyclonal Antibody