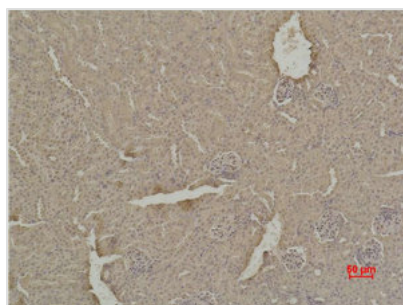




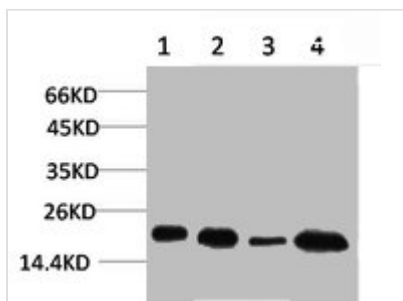
SOD1 Antibody

Product Code	CSB-PA080200
Storage	Upon receipt, store at -20°C or -80°C. Avoid repeated freeze.
Uniprot No.	P00441
Immunogen	Recombinant Protein
Raised In	Rabbit
Species Reactivity	Human,Mouse,Rat
Tested Applications	WB, IHC; WB:1:2000-5000, IHC:1:200-500
Form	Liquid
Conjugate	Non-conjugated
Storage Buffer	PBS, pH 7.4, containing 0.02% sodium azide as Preservative and 50% Glycerol.
Isotype	IgG
Alias	Superoxide dismutase [Cu-Zn]
Immunogen Species	Homo sapiens (Human)
Target Names	SOD1

Image



Immunohistochemical analysis of paraffin-embedded Mouse Kidney Tissue using SOD1 Polyclonal Antibody.



Western blot analysis of 1) HeLa, 2) MCF7, 3) Mouse Brain Tissue, 4) Rat Brain Tissue using SOD1 Polyclonal Antibody.