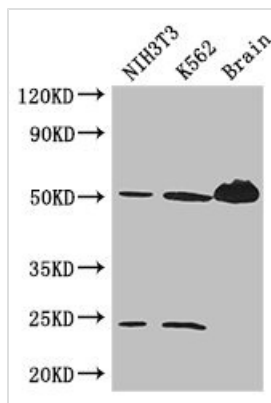




# TUBA4A Antibody

<b>Product Code</b>	CSB-PA09499A0Rb
<b>Storage</b>	Upon receipt, store at -20°C or -80°C. Avoid repeated freeze.
<b>Uniprot No.</b>	P68366
<b>Immunogen</b>	Recombinant Human Tubulin alpha-4A chain protein (20-183AA)
<b>Raised In</b>	Rabbit
<b>Species Reactivity</b>	Human, Mouse
<b>Tested Applications</b>	ELISA, WB, IHC, IF, IP; Recommended dilution: WB:1:1000-1:5000, IHC:1:20-1:200, IF:1:50-1:200, IP:1:200-1:2000
<b>Form</b>	Liquid
<b>Conjugate</b>	Non-conjugated
<b>Storage Buffer</b>	Preservative: 0.03% Proclin 300 Constituents: 50% Glycerol, 0.01M PBS, PH 7.4
<b>Purification Method</b>	>95%, Protein G purified
<b>Isotype</b>	IgG
<b>Clonality</b>	Polyclonal
<b>Alias</b>	Tubulin alpha-4A chain (Alpha-tubulin 1) (Testis-specific alpha-tubulin) (Tubulin H2-alpha) (Tubulin alpha-1 chain), TUBA4A, TUBA1
<b>Immunogen Species</b>	Homo sapiens (Human)
<b>Research Area</b>	Tags & Cell Markers
<b>Target Names</b>	TUBA4A

## Image



### Western Blot

Positive WB detected in: NIH/3T3 whole cell lysate, K562 whole cell lysate, Mouse brain tissue

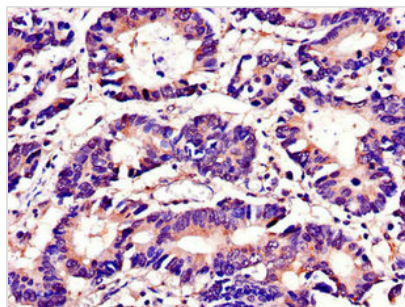
All lanes: TUBA4A antibody at 3μg/ml

### Secondary

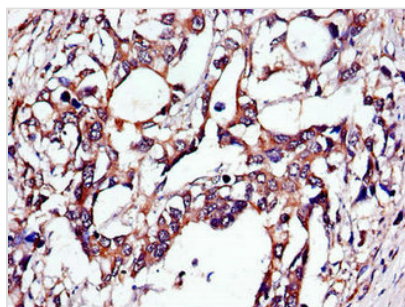
Goat polyclonal to rabbit IgG at 1/50000 dilution

Predicted band size: 50, 49 kDa

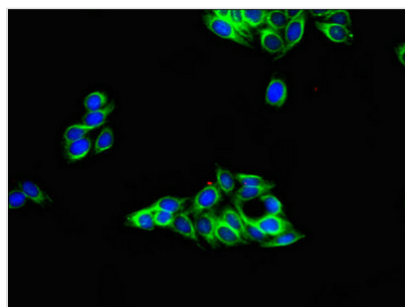
Observed band size: 50, 24 kDa



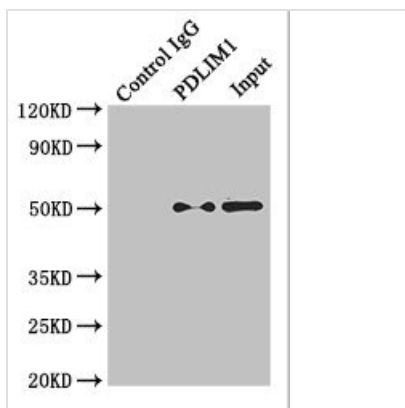
Immunohistochemistry of paraffin-embedded human colon cancer using CSB-PA09499A0Rb at dilution of 1:100



Immunohistochemistry of paraffin-embedded human gastric cancer using CSB-PA09499A0Rb at dilution of 1:100



Immunofluorescent analysis of HepG2 cells using CSB-PA09499A0Rb at dilution of 1:100 and Alexa Fluor 488-conjugated AffiniPure Goat Anti-Rabbit IgG(H+L)



Immunoprecipitating TUBA4A in K562 whole cell lysate  
 Lane 1: Rabbit control IgG instead of (1μg) instead of CSB-PA09499A0Rb in K562 whole cell lysate. For western blotting, a HRP-conjugated light chain specific antibody was used as the Secondary antibody (1/50000)  
 Lane 2: CSB-PA09499A0Rb (4μg) + K562 whole cell lysate (500μg)  
 Lane 3: K562 whole cell lysate (20μg)