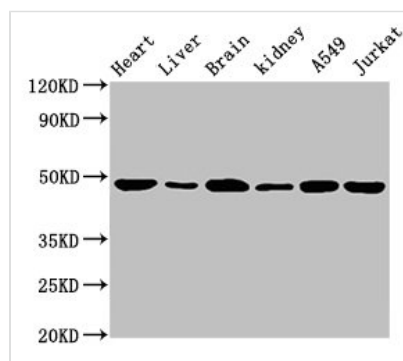




# ENO2 Antibody

<b>Product Code</b>	CSB-PA09764A0Rb
<b>Storage</b>	Upon receipt, store at -20°C or -80°C. Avoid repeated freeze.
<b>Uniprot No.</b>	P09104
<b>Immunogen</b>	Recombinant Human Gamma-enolase protein (2-431AA)
<b>Raised In</b>	Rabbit
<b>Species Reactivity</b>	Human, Mouse
<b>Tested Applications</b>	ELISA, WB, IHC; Recommended dilution: WB:1:1000-1:5000, IHC:1:20-1:200
<b>Form</b>	Liquid
<b>Conjugate</b>	Non-conjugated
<b>Storage Buffer</b>	Preservative: 0.03% Proclin 300 Constituents: 50% Glycerol, 0.01M PBS, PH 7.4
<b>Purification Method</b>	>95%, Protein G purified
<b>Isotype</b>	IgG
<b>Clonality</b>	Polyclonal
<b>Alias</b>	Gamma-enolase (EC 4.2.1.11) (2-phospho-D-glycerate hydro-lyase) (Enolase 2) (Neural enolase) (Neuron-specific enolase) (NSE), ENO2
<b>Immunogen Species</b>	Homo sapiens (Human)
<b>Research Area</b>	Neuroscience
<b>Target Names</b>	ENO2

## Image



### Western Blot

Positive WB detected in: Mouse heart tissue, Mouse liver tissue, Mouse brain tissue, Mouse kidney tissue, A549 whole cell lysate, Jurkat whole cell lysate

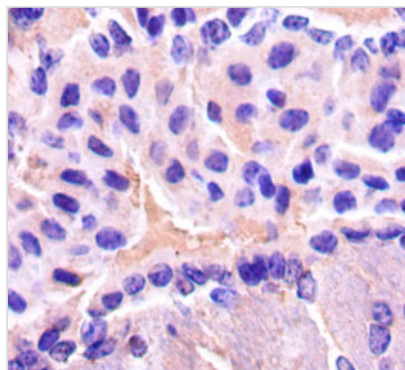
All lanes: ENO2 antibody at 1.5µg/ml

Secondary

Goat polyclonal to rabbit IgG at 1/10000 dilution

Predicted band size: 48, 43 kDa

Observed band size: 48 kDa



Immunohistochemistry of paraffin-embedded mouse brain tissue using CSB-PA09764A0Rb at dilution of 1:50