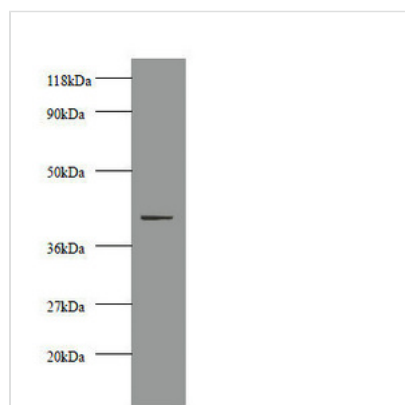




CKM Antibody

Product Code	CSB-PA09809A0Rb
Storage	Upon receipt, store at -20°C or -80°C. Avoid repeated freeze.
Uniprot No.	P06732
Immunogen	Recombinant Human Creatine kinase M-type protein (1-379AA)
Raised In	Rabbit
Species Reactivity	Human, Mouse
Tested Applications	ELISA, WB, IHC; Recommended dilution: WB:1:1000-1:5000, IHC:1:20-1:200
Form	Liquid
Conjugate	Non-conjugated
Storage Buffer	Preservative: 0.03% Proclin 300 Constituents: 50% Glycerol, 0.01M PBS, PH 7.4
Purification Method	>95%, Protein G purified
Isotype	IgG
Clonality	Polyclonal
Alias	Creatine kinase M-type (EC 2.7.3.2) (Creatine kinase M chain) (Creatine phosphokinase M-type) (CPK-M) (M-CK), CKM, CKMM
Immunogen Species	Homo sapiens (Human)
Research Area	Signal Transduction
Target Names	CKM

Image



Western blot

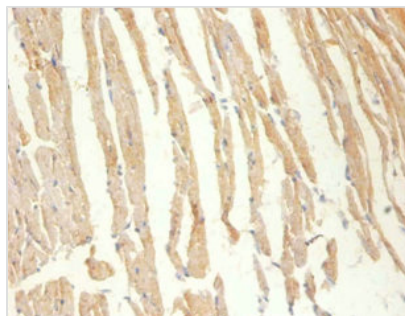
All lanes: Creatine kinase M-type antibody at 2µg/ml + 293T whole cell lysate

Secondary

Goat polyclonal to rabbit IgG at 1/10000 dilution

Predicted band size: 44 kDa

Observed band size: 44 kDa



Immunohistochemistry of paraffin-embedded
Mouse heart tissue using CSB-PA09809A0Rb at
dilution of 1:100