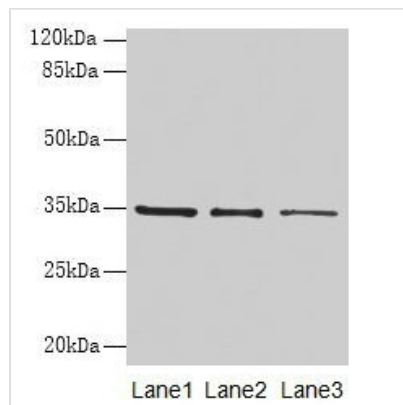




GDF15 Antibody

Product Code	CSB-PA10029A0Rb
Storage	Upon receipt, store at -20°C or -80°C. Avoid repeated freeze.
Uniprot No.	Q99988
Immunogen	Recombinant Human Growth/differentiation factor 15 protein (198-308AA)
Raised In	Rabbit
Species Reactivity	Human
Tested Applications	ELISA, WB, IHC; Recommended dilution: WB:1:1000-1:5000, IHC:1:20-1:200
Form	Liquid
Conjugate	Non-conjugated
Storage Buffer	Preservative: 0.03% Proclin 300 Constituents: 50% Glycerol, 0.01M PBS, PH 7.4
Purification Method	>95%, Protein G purified
Isotype	IgG
Clonality	Polyclonal
Alias	Growth/differentiation factor 15 (GDF-15) (Macrophage inhibitory cytokine 1) (MIC-1) (NSAID-activated gene 1 protein) (NAG-1) (NSAID-regulated gene 1 protein) (NRG-1) (Placental TGF-beta) (Placental bone morphogenetic protein) (Prostate differentiation factor), GDF15, MIC1 PDF PLAB PTGFB
Immunogen Species	Homo sapiens (Human)
Research Area	Cell Biology
Target Names	GDF15

Image



Western blot

All lanes: GDF15 antibody at 4μg/ml

Lane 1: HepG2 whole cell lysate

Lane 2: Human placenta tissue

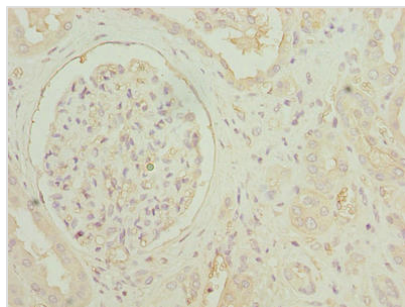
Lane 3: A549 whole cell lysate

Secondary

Goat polyclonal to rabbit IgG at 1/10000 dilution

Predicted band size: 35 kDa

Observed band size: 35 kDa



Immunohistochemistry of paraffin-embedded human kidney tissue using CSB-PA10029A0Rb at diluton of 1:100