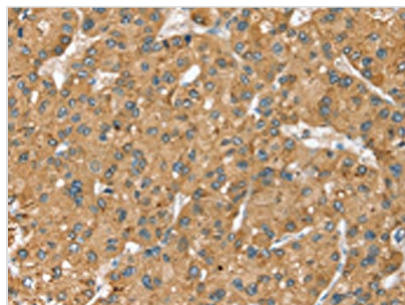




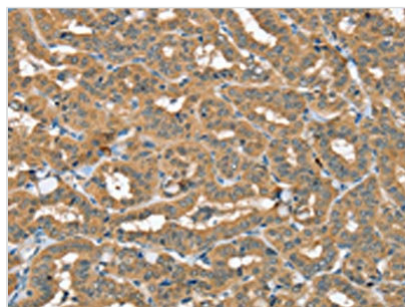
SEC14L2 Antibody

Product Code	CSB-PA106236
Storage	Upon receipt, store at -20°C or -80°C. Avoid repeated freeze.
Uniprot No.	O76054
Immunogen	Synthetic peptide of Human SEC14L2
Raised In	Rabbit
Species Reactivity	Human,Mouse
Tested Applications	ELISA,WB,IHC;ELISA:1:2000-1:5000,WB:1:500-1:2000,IHC:1:25-1:100
Form	Liquid
Conjugate	Non-conjugated
Storage Buffer	-20°C, pH7.4 PBS, 0.05% NaN ₃ , 40% Glycerol
Purification Method	Antigen affinity purification
Isotype	IgG
Alias	SEC14-like 2
Immunogen Species	Homo sapiens (Human)
Target Names	SEC14L2

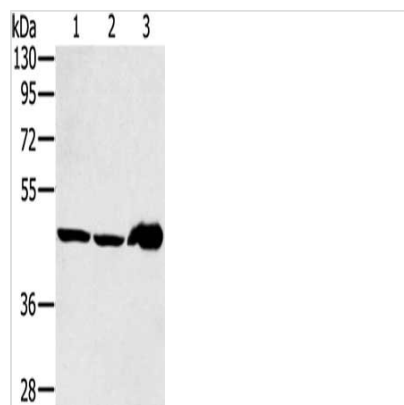
Image



The image on the left is immunohistochemistry of paraffin-embedded Human liver cancer tissue using CSB-PA106236(SEC14L2 Antibody) at dilution 1/40, on the right is treated with synthetic peptide. (Original magnification: ×200)



The image on the left is immunohistochemistry of paraffin-embedded Human thyroid cancer tissue using CSB-PA106236(SEC14L2 Antibody) at dilution 1/40, on the right is treated with synthetic peptide. (Original magnification: ×200)



Gel: 8%SDS-PAGE, Lysate: 40 μ g, Lane 1-3:
 Mouse liver tissue, PC3 cells, human fetal liver
 tissue, Primary antibody: CSB-
 PA106236(SEC14L2 Antibody) at dilution 1/400,
 Secondary antibody: Goat anti rabbit IgG at
 1/8000 dilution, Exposure time: 2 minutes