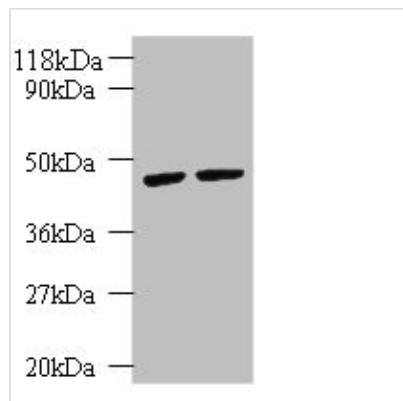




KRT18 Antibody

Product Code	CSB-PA10629A0Rb
Storage	Upon receipt, store at -20°C or -80°C. Avoid repeated freeze.
Uniprot No.	P05783
Immunogen	Recombinant Human Keratin, type I cytoskeletal 18 protein (102-396AA)
Raised In	Rabbit
Species Reactivity	Human, Zebrafish
Tested Applications	ELISA, WB, IHC, IF; Recommended dilution: WB:1:500-1:5000, IHC:1:100-1:1000, IF:1:50-1:500
Form	Liquid
Conjugate	Non-conjugated
Storage Buffer	Preservative: 0.1mol/L NaCl, 15mmol/L NaN ₃ , PH7.2
Purification Method	>95%, Protein G purified
Isotype	IgG
Clonality	Polyclonal
Alias	Cell proliferation inducing gene 46 protein antibody; Cell proliferation inducing protein 46 antibody; Cell proliferation-inducing gene 46 protein antibody; CK 18 antibody; CK-18 antibody; CK18 antibody; CYK 18 antibody; CYK18 antibody; Cytokeratin 18 antibody; Cytokeratin endo B antibody; Cytokeratin-18 antibody; K 18 antibody; K18 antibody; K1C18_HUMAN antibody; KA18 antibody; Keratin 18 antibody; Keratin 18, type I antibody; Keratin D antibody; keratin, type I cytoskeletal 18 antibody; Keratin-18 antibody; Krt18 antibody
Immunogen Species	Homo sapiens (Human)
Research Area	Tags & Cell Markers
Target Names	KRT18

Image



Western blot

All lanes: KRT18 antibody at 2µg/ml

Lane 1: K562 whole cell lysate

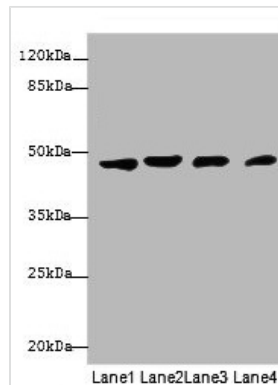
Lane 2: HepG2 whole cell lysate

Secondary

Goat polyclonal to rabbit IgG at 1/10000 dilution

Predicted band size: 49 kDa

Observed band size: 49 kDa



Western blot

All lanes: KRT18 antibody at 12 μ g/ml

Lane 1: A431 whole cell lysate

Lane 2: Hela whole cell lysate

Lane 3: Jurkat whole cell lysate

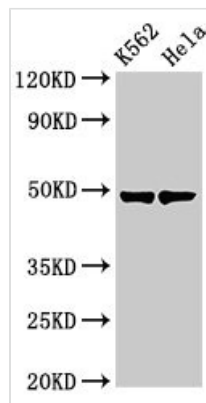
Lane 4: Zebrafish lysate

Secondary

Goat polyclonal to rabbit IgG at 1/10000 dilution

Predicted band size: 49 kDa

Observed band size: 49 kDa



Western Blot

Positive WB detected in: K562 whole cell lysate,

Hela whole cell lysate

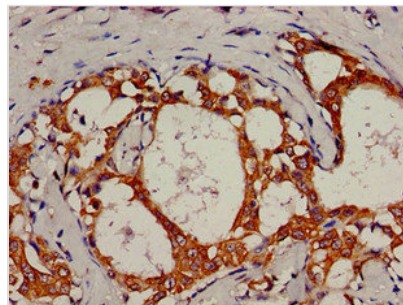
All lanes: KRT18 antibody at 3 μ g/ml

Secondary

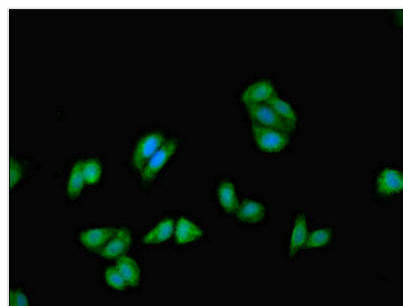
Goat polyclonal to rabbit IgG at 1/50000 dilution

Predicted band size: 49 kDa

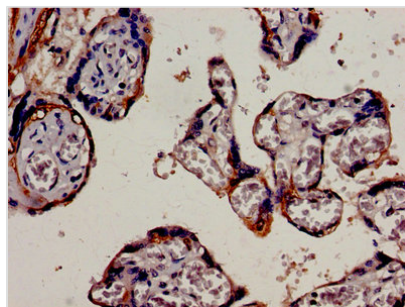
Observed band size: 49 kDa



IHC image of CSB-PA10629A0Rb diluted at 1:800 and staining in paraffin-embedded human breast cancer performed on a Leica BondTM system. After dewaxing and hydration, antigen retrieval was mediated by high pressure in a citrate buffer (pH 6.0). Section was blocked with 10% normal goat serum 30min at RT. Then primary antibody (1% BSA) was incubated at 4°C overnight. The primary is detected by a biotinylated secondary antibody and visualized using an HRP conjugated SP system.



Immunofluorescent analysis of HepG2 cells using CSB-PA10629A0Rb at dilution of 1:100 and Alexa Fluor 488-conjugated AffiniPure Goat Anti-Rabbit IgG(H+L)



Immunocytochemistry analysis of human placenta tissue using CSB-PA10629A0Rb at dilution of 1:100