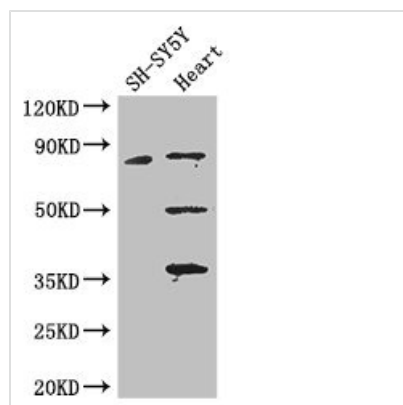




MAPT Antibody

| | |
|----------------------------|--|
| Product Code | CSB-PA11169A0Rb |
| Storage | Upon receipt, store at -20°C or -80°C. Avoid repeated freeze. |
| Uniprot No. | P10636 |
| Immunogen | Recombinant Human Microtubule-associated protein tau protein (33-166AA) |
| Raised In | Rabbit |
| Species Reactivity | Human, Mouse |
| Tested Applications | ELISA, WB, IHC, IF; Recommended dilution: WB:1:1000-1:5000, IHC:1:20-1:200, IF:1:50-1:200 |
| Form | Liquid |
| Conjugate | Non-conjugated |
| Storage Buffer | Preservative: 0.03% Proclin 300 Constituents: 50% Glycerol, 0.01M PBS, PH 7.4 |
| Purification Method | >95%, Protein G purified |
| Isotype | IgG |
| Clonality | Polyclonal |
| Alias | Microtubule-associated protein tau (Neurofibrillary tangle protein) (Paired helical filament-tau) (PHF-tau), MAPT, MAPTL MTBT1 TAU |
| Immunogen Species | Homo sapiens (Human) |
| Research Area | Neuroscience |
| Target Names | MAPT |

Image



Western Blot

Positive WB detected in: SH-SY5Y whole cell lysate, Mouse heart tissue

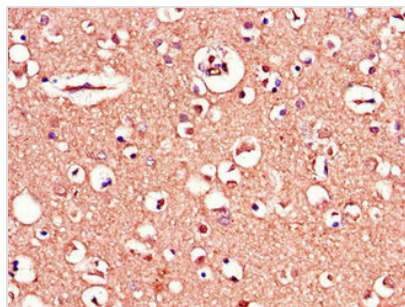
All lanes: MAPT antibody at 3.25μg/ml

Secondary

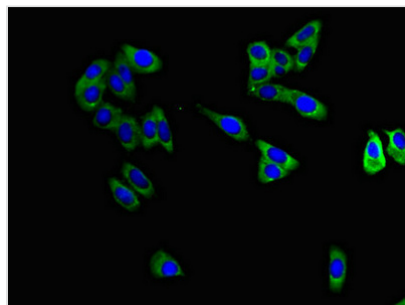
Goat polyclonal to rabbit IgG at 1/50000 dilution

Predicted band size: 79, 37, 33, 40, 43, 41, 46, 81 kDa

Observed band size: 79, 50, 36 kDa



Immunohistochemistry of paraffin-embedded human brain tissue using CSB-PA11169A0Rb at dilution of 1:100



Immunofluorescent analysis of HepG2 cells using CSB-PA11169A0Rb at dilution of 1:100 and Alexa Fluor 488-conjugated AffiniPure Goat Anti-Rabbit IgG(H+L)