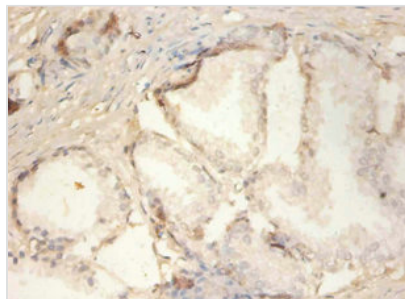




PLA2G2A Antibody

Product Code	CSB-PA11209A0Rb
Storage	Upon receipt, store at -20°C or -80°C. Avoid repeated freeze.
Uniprot No.	P14555
Immunogen	Recombinant Human Phospholipase A2, membrane associated protein (21-144AA)
Raised In	Rabbit
Species Reactivity	Human
Tested Applications	ELISA, IHC; Recommended dilution: IHC:1:20-1:200
Form	Liquid
Conjugate	Non-conjugated
Storage Buffer	Preservative: 0.03% Proclin 300 Constituents: 50% Glycerol, 0.01M PBS, PH 7.4
Purification Method	>95%, Protein G purified
Isotype	IgG
Clonality	Polyclonal
Alias	Phospholipase A2, membrane associated (EC 3.1.1.4) (GIIC sPLA2) (Group IIA phospholipase A2) (Non-pancreatic secretory phospholipase A2) (NPS-PLA2) (Phosphatidylcholine 2-acylhydrolase 2A), PLA2G2A, PLA2B PLA2L RASF-A
Immunogen Species	Homo sapiens (Human)
Research Area	Cardiovascular
Target Names	PLA2G2A

Image



Immunohistochemistry of paraffin-embedded human prostate tissue using CSB-PA11209A0Rb at dilution of 1:100