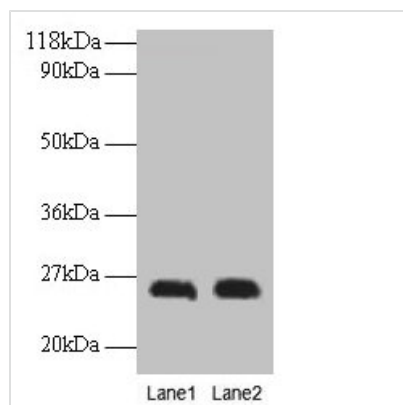




CSH1 Antibody

Product Code	CSB-PA11377A0Rb
Storage	Upon receipt, store at -20°C or -80°C. Avoid repeated freeze.
Uniprot No.	P0DML2
Immunogen	Recombinant Human Chorionic somatomammotropin hormone 1 protein (27-217AA)
Raised In	Rabbit
Species Reactivity	Human
Tested Applications	ELISA, WB; Recommended dilution: WB:1:1000-1:5000
Form	Liquid
Conjugate	Non-conjugated
Storage Buffer	Preservative: 0.03% Proclin 300 Constituents: 50% Glycerol, 0.01M PBS, PH 7.4
Purification Method	>95%, Protein G purified
Isotype	IgG
Clonality	Polyclonal
Alias	Chorionic somatomammotropin hormone 1 (Choriomammotropin) (Lactogen) (Placental lactogen) (PL), CSH1
Immunogen Species	Homo sapiens (Human)
Research Area	Signal Transduction
Target Names	CSH1

Image



Western blot
 All lanes: CSH1 antibody at 2μg/ml
 Lane 1: A549 whole cell lysate
 Lane 2: U251 whole cell lysate
 Secondary
 Goat polyclonal to rabbit IgG at 1/15000 dilution
 Predicted band size: 26 kDa
 Observed band size: 26 kDa