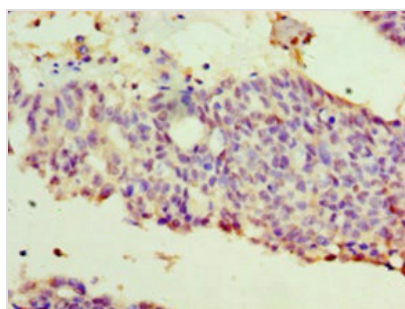




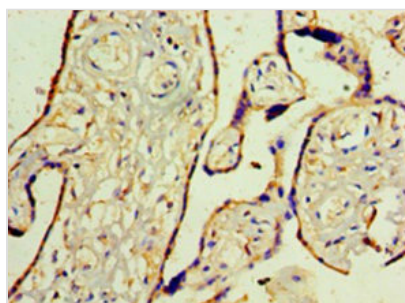
WT1 Antibody

Product Code	CSB-PA11609A0Rb
Storage	Upon receipt, store at -20°C or -80°C. Avoid repeated freeze.
Uniprot No.	P19544
Immunogen	Recombinant Human Wilms tumor protein (1-449AA)
Raised In	Rabbit
Species Reactivity	Human
Tested Applications	ELISA, IHC; Recommended dilution: IHC:1:20-1:200
Form	Liquid
Conjugate	Non-conjugated
Storage Buffer	Preservative: 0.03% Proclin 300 Constituents: 50% Glycerol, 0.01M PBS, PH 7.4
Purification Method	>95%, Protein G purified
Isotype	IgG
Clonality	Polyclonal
Alias	Wilms tumor protein (WT33), WT1
Immunogen Species	Homo sapiens (Human)
Research Area	Tags & Cell Markers
Target Names	WT1

Image



Immunohistochemistry of paraffin-embedded human endometrial cancer using CSB-PA11609A0Rb at dilution of 1:100



Immunohistochemistry of paraffin-embedded human placenta tissue using CSB-PA11609A0Rb at dilution of 1:100