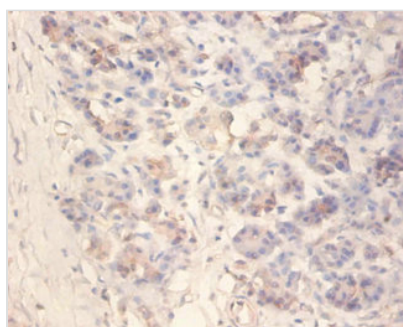




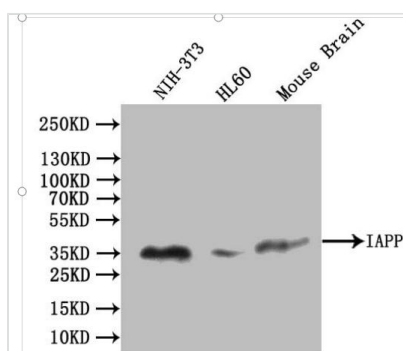
IAPP Antibody

Product Code	CSB-PA12224A0Rb
Storage	Upon receipt, store at -20°C or -80°C. Avoid repeated freeze.
Uniprot No.	P10997
Immunogen	Synthetic peptide of human IAPP
Raised In	Rabbit
Species Reactivity	Human, Mouse
Tested Applications	ELISA, WB, IHC; Recommended dilution: WB:1:500-1:2000, IHC:1:20-1:200
Form	Liquid
Conjugate	Non-conjugated
Storage Buffer	pH7.4 PBS, 0.05% NaN ₃ , 40% Glycerol
Purification Method	Antigen affinity purification
Isotype	IgG
Clonality	Polyclonal
Product Type	Polyclonal Antibody
Immunogen Species	Homo sapiens (Human)
Research Area	Signal Transduction
Target Names	IAPP

Image



Immunohistochemistry of paraffin-embedded human pancreatic tissue using CSB-PA12224A0Rb at dilution of 1:100



Western Blot

Positive WB detected in: NIH-3T3 whole cell lysate, HL60 whole cell lysate, Mouse Brain tissue lysate

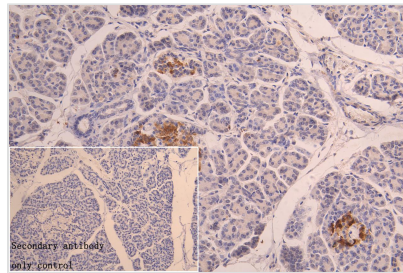
All lanes: IAPP Antibody at 1:1000

Secondary

Goat polyclonal to rabbit IgG at 1/50000 dilution

Predicted band size: 10 kDa

Observed band size: 35 kDa



IHC image of CSB-PA12224A0Rb diluted at 1:150 and staining in paraffin-embedded human pancreatic tissue performed on a Leica Bond™ system. After dewaxing and hydration, antigen retrieval was mediated by high pressure in a citrate buffer (pH 6.0). Section was blocked with 10% normal goat serum 30min at RT. Then primary antibody (1% BSA) was incubated at 4°C overnight. The primary is detected by a Goat anti-rabbit polymer IgG labeled by HRP and visualized using 0.05% DAB. Secondary antibody only control: uses 1% BSA instead of primary antibody