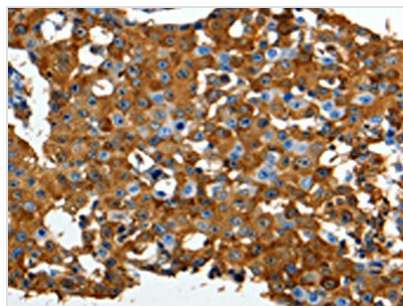




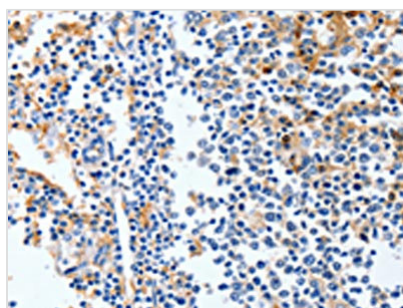
LRP1 Antibody

Product Code	CSB-PA129534
Storage	Upon receipt, store at -20°C or -80°C. Avoid repeated freeze.
Uniprot No.	Q07954
Immunogen	Synthetic peptide of Human LRP1
Raised In	Rabbit
Species Reactivity	Human
Tested Applications	ELISA,WB,IHC;ELISA:1:1000-1:5000,WB:1:500-1:2000,IHC:1:100-1:300
Form	Liquid
Conjugate	Non-conjugated
Storage Buffer	-20°C, pH7.4 PBS, 0.05% NaN ₃ , 40% Glycerol
Purification Method	Antigen affinity purification
Isotype	IgG
Immunogen Species	Homo sapiens (Human)
Target Names	LRP1

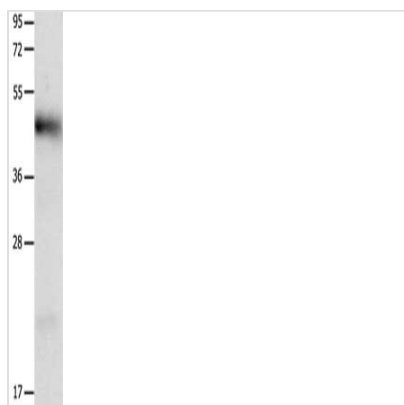
Image



The image on the left is immunohistochemistry of paraffin-embedded Human breast cancer tissue using CSB-PA129534(LRP1 Antibody) at dilution 1/90, on the right is treated with synthetic peptide. (Original magnification: x200)



The image on the left is immunohistochemistry of paraffin-embedded Human tonsil tissue using CSB-PA129534(LRP1 Antibody) at dilution 1/90, on the right is treated with synthetic peptide. (Original magnification: x200)



Gel: 12%SDS-PAGE, Lysate: 40 μ g, Lane:
Human liver cancer tissue, Primary antibody:
CSB-PA129534(LRP1 Antibody) at dilution
1/1250, Secondary antibody: Goat anti rabbit IgG
at 1/8000 dilution, Exposure time: 40 seconds