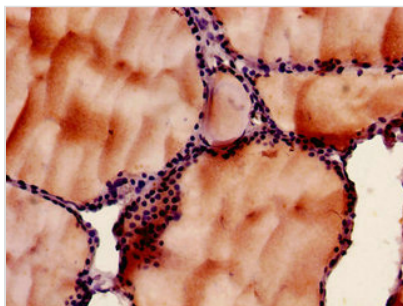




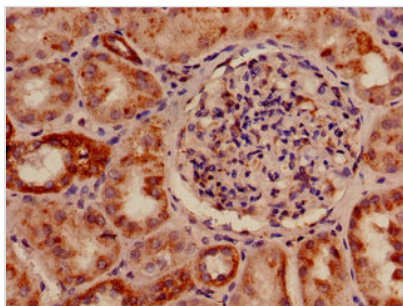
# SLC33A1 Antibody

<b>Product Code</b>	CSB-PA13339A0Rb
<b>Storage</b>	Upon receipt, store at -20°C or -80°C. Avoid repeated freeze.
<b>Uniprot No.</b>	O00400
<b>Immunogen</b>	Recombinant Human Acetyl-coenzyme A transporter 1 protein (1-74AA)
<b>Raised In</b>	Rabbit
<b>Species Reactivity</b>	Human, Mouse
<b>Tested Applications</b>	ELISA, WB, IHC; Recommended dilution: WB:1:1000-1:5000, IHC:1:20-1:200
<b>Form</b>	Liquid
<b>Conjugate</b>	Non-conjugated
<b>Storage Buffer</b>	Preservative: 0.03% Proclin 300 Constituents: 50% Glycerol, 0.01M PBS, PH 7.4
<b>Purification Method</b>	>95%, Protein G purified
<b>Isotype</b>	IgG
<b>Clonality</b>	Polyclonal
<b>Alias</b>	Acetyl-coenzyme A transporter 1 (AT-1) (Acetyl-CoA transporter 1) (Solute carrier family 33 member 1), SLC33A1, ACATN AT1
<b>Immunogen Species</b>	Homo sapiens (Human)
<b>Research Area</b>	Tags & Cell Markers
<b>Target Names</b>	SLC33A1

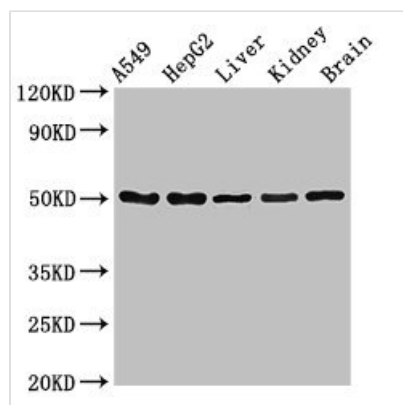
## Image



Immunohistochemistry of paraffin-embedded human thyroid tissue using CSB-PA13339A0Rb at dilution of 1:100



Immunohistochemistry of paraffin-embedded human kidney tissue using CSB-PA13339A0Rb at dilution of 1:100



#### Western Blot

Positive WB detected in: A549 whole cell lysate, HepG2 whole cell lysate, Mouse liver tissue, Mouse kidney tissue, Mouse brain tissue

All lanes: SLC33A1 antibody at 2.5μg/ml

#### Secondary

Goat polyclonal to rabbit IgG at 1/50000 dilution

Predicted band size: 61 kDa

Observed band size: 50 kDa