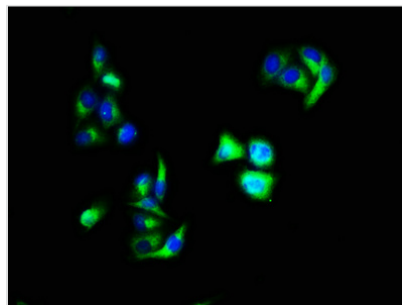




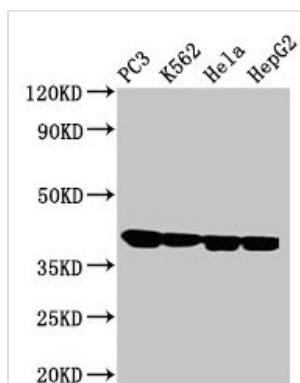
ANXA1 Antibody

Product Code	CSB-PA13457A0Rb
Storage	Upon receipt, store at -20°C or -80°C. Avoid repeated freeze.
Uniprot No.	P04083
Immunogen	Recombinant Human Annexin A1 protein (5-346AA)
Raised In	Rabbit
Species Reactivity	Human
Tested Applications	ELISA, WB, IF, IP; Recommended dilution: WB:1:1000-1:5000, IF:1:50-1:200, IP:1:200-1:2000
Form	Liquid
Conjugate	Non-conjugated
Storage Buffer	Preservative: 0.03% Proclin 300 Constituents: 50% Glycerol, 0.01M PBS, PH 7.4
Purification Method	>95%, Protein G purified
Isotype	IgG
Clonality	Polyclonal
Alias	Annexin A1 (Annexin I) (Annexin-1) (Calpactin II) (Calpactin-2) (Chromobindin-9) (Lipocortin I) (Phospholipase A2 inhibitory protein) (p35), ANXA1, ANX1 LPC1
Immunogen Species	Homo sapiens (Human)
Research Area	Signal Transduction
Target Names	ANXA1

Image



Immunofluorescence staining of HeLa cells with CSB-PA13457A0Rb at 1:66, counter-stained with DAPI. The cells were fixed in 4% formaldehyde, permeabilized using 0.2% Triton X-100 and blocked in 10% normal Goat Serum. The cells were then incubated with the antibody overnight at 4°C. The secondary antibody was Alexa Fluor 488-conjugated AffiniPure Goat Anti-Rabbit IgG(H+L).



Western Blot

Positive WB detected in: PC-3 whole cell lysate, K562 whole cell lysate, HeLa whole cell lysate, HepG2 whole cell lysate

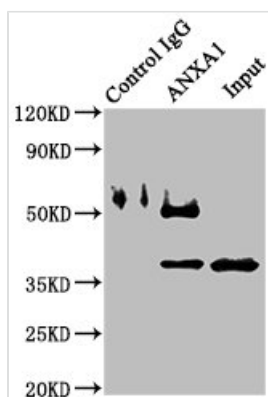
All lanes: ANXA1 antibody at 2μg/ml

Secondary

Goat polyclonal to rabbit IgG at 1/50000 dilution

Predicted band size: 39 kDa

Observed band size: 39 kDa



Immunoprecipitating ANXA1 in K562 whole cell lysate

Lane 1: Rabbit control IgG instead of CSB-PA13457A0Rb in K562 whole cell lysate. For western blotting, a HRP-conjugated Protein G antibody was used as the secondary antibody (1/2000)

Lane 2: CSB-PA13457A0Rb (8μg) + K562 whole cell lysate (500μg)

Lane 3: K562 whole cell lysate (10μg)