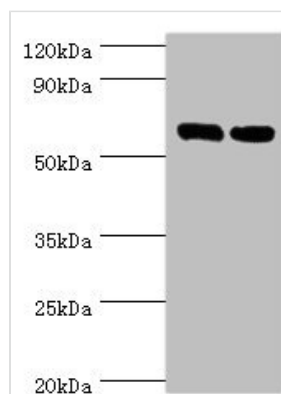




# TROVE2 Antibody

<b>Product Code</b>	CSB-PA13749A0Rb
<b>Storage</b>	Upon receipt, store at -20°C or -80°C. Avoid repeated freeze.
<b>Uniprot No.</b>	P10155
<b>Immunogen</b>	Recombinant Human 60 kDa SS-A/Ro ribonucleoprotein protein (3-535AA)
<b>Raised In</b>	Rabbit
<b>Species Reactivity</b>	Human, Mouse, Rat
<b>Tested Applications</b>	ELISA, WB, IHC, IF; Recommended dilution: WB:1:500-1:5000, IHC:1:20-1:200, IF:1:50-1:200
<b>Form</b>	Liquid
<b>Conjugate</b>	Non-conjugated
<b>Storage Buffer</b>	Preservative: 0.03% Proclin 300 Constituents: 50% Glycerol, 0.01M PBS, PH 7.4
<b>Purification Method</b>	>95%, Protein G purified
<b>Isotype</b>	IgG
<b>Clonality</b>	Polyclonal
<b>Alias</b>	60 kDa SS-A/Ro ribonucleoprotein (60 kDa Ro protein) (60 kDa ribonucleoprotein Ro) (RoRNP) (Ro 60 kDa autoantigen) (Sjogren syndrome antigen A2) (Sjogren syndrome type A antigen) (SS-A) (TROVE domain family member 2), TROVE2, RO60 SSA2
<b>Immunogen Species</b>	Homo sapiens (Human)
<b>Research Area</b>	Immunology
<b>Target Names</b>	TROVE2

## Image



### Western blot

All lanes: TROVE2 antibody at 2µg/ml

Lane 1: Hela whole cell lysate

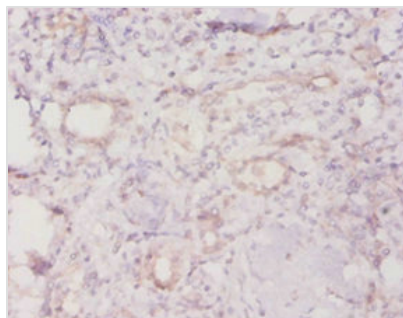
Lane 2: 293T whole cell lysate

Secondary

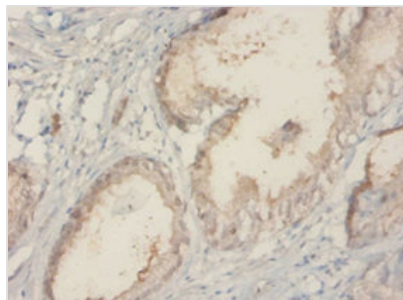
Goat polyclonal to rabbit IgG at 1/10000 dilution

Predicted band size: 61, 24, 59, 60 kDa

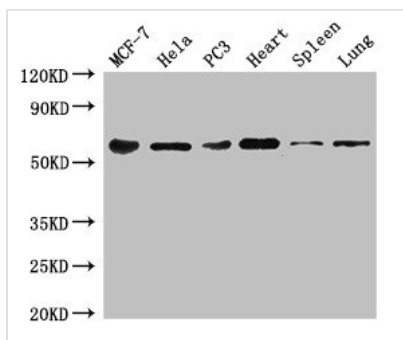
Observed band size: 61 kDa



Immunohistochemistry of paraffin-embedded human kidney tissue using CSB-PA13749A0Rb at dilution of 1:20



Immunohistochemistry of paraffin-embedded human prostate tissue using CSB-PA13749A0Rb at dilution of 1:20



#### Western Blot

Positive WB detected in: MCF-7 whole cell lysate, HeLa whole cell lysate, PC-3 whole cell lysate, Mouse heart tissue, Mouse spleen tissue, Mouse lung tissue

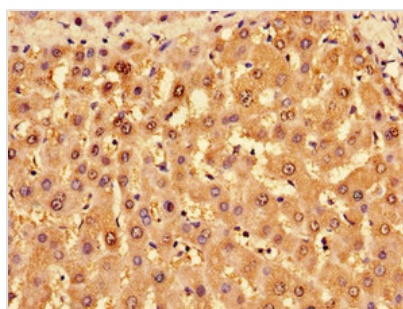
All lanes: TROVE2 antibody at 3μg/ml

Secondary

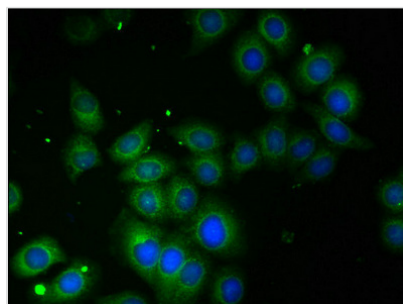
Goat polyclonal to rabbit IgG at 1/50000 dilution

Predicted band size: 61, 24, 59, 60 kDa

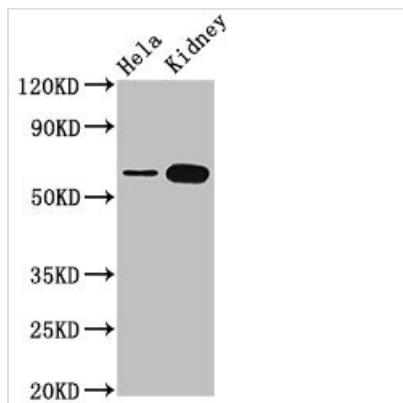
Observed band size: 61 kDa



Immunohistochemistry of paraffin-embedded human liver tissue using CSB-PA13749A0Rb at dilution of 1:100



Immunofluorescent analysis of A549 cells using CSB-PA13749A0Rb at dilution of 1:100



#### Western Blot

Positive WB detected in: HeLa whole cell lysate,  
Rat kidney tissue

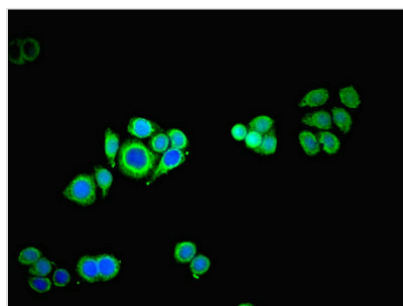
All lanes: TROVE2 antibody at 3.4μg/ml

Secondary

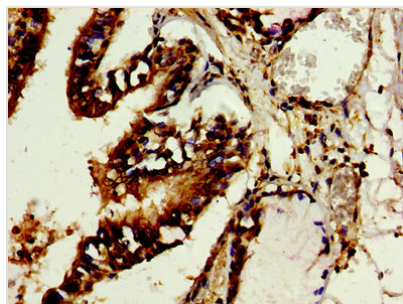
Goat polyclonal to rabbit IgG at 1/50000 dilution

Predicted band size: 61, 24, 59, 60 kDa

Observed band size: 61 kDa



Immunofluorescent analysis of PC-3 cells using  
CSB-PA13749A0Rb at dilution of 1:100 and  
Alexa Fluor 488-conjugated AffiniPure Goat  
Anti-Rabbit IgG(H+L)



Immunohistochemistry of paraffin-embedded  
human lung tissue using CSB-PA13749A0Rb at  
dilution of 1:100