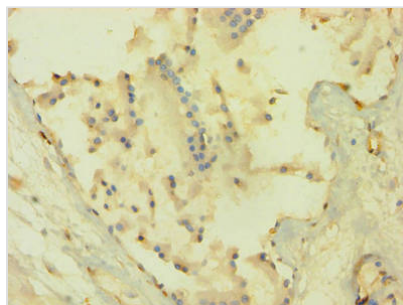




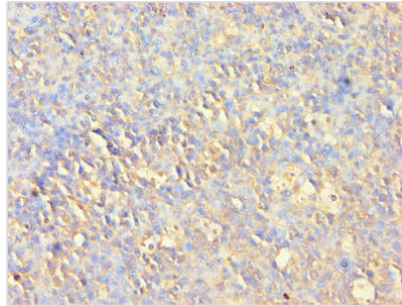
AKT1 Antibody

Product Code	CSB-PA15905A0Rb
Storage	Upon receipt, store at -20°C or -80°C. Avoid repeated freeze.
Uniprot No.	P31749
Immunogen	Recombinant Human RAC-alpha serine/threonine-protein kinase protein (1-480AA)
Raised In	Rabbit
Species Reactivity	Human
Tested Applications	ELISA, WB, IHC, IF, IP; Recommended dilution: WB:1:500-1:5000, IHC:1:100-1:1000, IF:1:200-1:500, IP:1:200-1:2000
Form	Liquid
Conjugate	Non-conjugated
Storage Buffer	Preservative: 0.03% Proclin 300 Constituents: 50% Glycerol, 0.01M PBS, PH 7.4
Purification Method	>95%, Protein G purified
Isotype	IgG
Clonality	Polyclonal
Alias	RAC-alpha serine/threonine-protein kinase (EC 2.7.11.1) (Protein kinase B) (PKB) (Protein kinase B alpha) (PKB alpha) (Proto-oncogene c-Akt) (RAC-PK-alpha), AKT1, PKB RAC
Immunogen Species	Homo sapiens (Human)
Research Area	Neuroscience
Target Names	AKT1

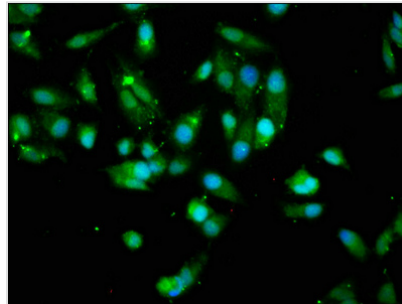
Image



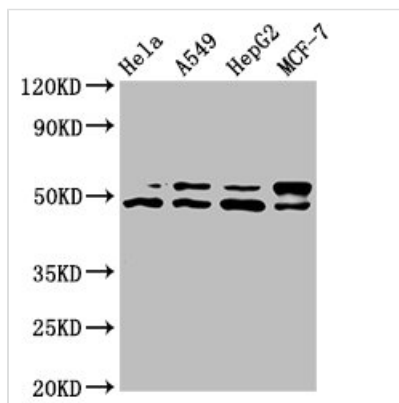
Immunohistochemistry of paraffin-embedded human prostate tissue using CSB-PA15905A0Rb at dilution of 1:100



Immunohistochemistry of paraffin-embedded human tonsil tissue using CSB-PA15905A0Rb at dilution of 1:100



Immunofluorescence staining of HeLa cells with CSB-PA15905A0Rb at 1:200, counter-stained with DAPI. The cells were fixed in 4% formaldehyde, permeabilized using 0.2% Triton X-100 and blocked in 10% normal Goat Serum. The cells were then incubated with the antibody overnight at 4°C. The secondary antibody was Alexa Fluor 488-conjugated AffiniPure Goat Anti-Rabbit IgG(H+L).



Western Blot

Positive WB detected in: HeLa whole cell lysate, A549 whole cell lysate, HepG2 whole cell lysate, MCF-7 whole cell lysate

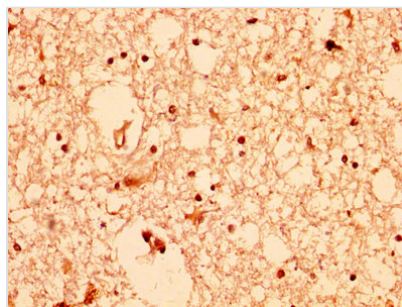
All lanes: AKT1 antibody at 7.4μg/ml

Secondary

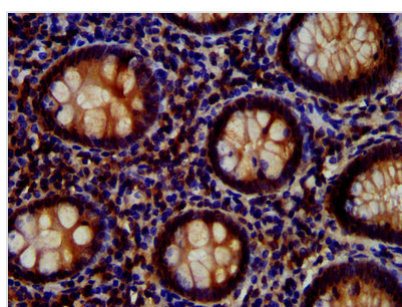
Goat polyclonal to rabbit IgG at 1/50000 dilution

Predicted band size: 56, 49 kDa

Observed band size: 56, 49 kDa



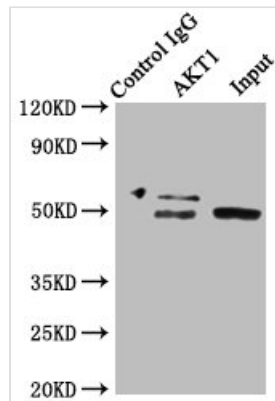
IHC image of CSB-PA15905A0Rb diluted at 1:200 and staining in paraffin-embedded human brain tissue performed on a Leica BondTM system. After dewaxing and hydration, antigen retrieval was mediated by high pressure in a citrate buffer (pH 6.0). Section was blocked with 10% normal goat serum 30min at RT. Then primary antibody (1% BSA) was incubated at 4°C overnight. The primary is detected by a biotinylated secondary antibody and visualized using an HRP conjugated SP system.



IHC image of CSB-PA15905A0Rb diluted at 1:700 and staining in paraffin-embedded human appendix tissue performed on a Leica BondTM system. After dewaxing and hydration, antigen retrieval was mediated by high pressure in a citrate buffer (pH 6.0). Section was blocked with 10% normal goat serum 30min at RT. Then primary antibody (1% BSA) was incubated at 4°C overnight. The primary is detected by a biotinylated secondary antibody and visualized



using an HRP conjugated SP system.



Immunoprecipitating AKT1 in HepG2 whole cell lysate

Lane 1: Rabbit control IgG instead of CSB-PA15905A0Rb in HepG2 whole cell lysate. For western blotting, a HRP-conjugated Protein G antibody was used as the secondary antibody (1/2000)

Lane 2: CSB-PA15905A0Rb (8μg) + HepG2 whole cell lysate (500μg)

Lane 3: HepG2 whole cell lysate (20μg)